

Chesar 2 Installation manual

STANDALONE version



chesar



Disclaimer

The information contained in this manual does not constitute legal advice. The European Chemicals Agency does not accept any liability with regard to the contents of this document. The European Chemicals Agency is entitled to modify or revise the document at any time with or without notice and with or without cause.

Chesar 2 Installation manual
STANDALONE version

Reference: ECHA-12-G-12-EN
Publ.date: 4 June 2014
Language: EN

© European Chemicals Agency, 2014-2015

Cover page © European Chemicals Agency

Reproduction is authorised provided the source is fully acknowledged in the form “Source: European Chemicals Agency, <http://echa.europa.eu/>”, and provided written notification is given to the ECHA Communication Unit (publications@echa.europa.eu).

ECHA invites interested parties to submit comments on this document which may be incorporated in future updates. These can be submitted via the Contact ECHA page at: http://echa.europa.eu/about/contact_en.asp

European Chemicals Agency

Mailing address: P.O. Box 400, FI-00121 Helsinki, Finland
Visiting address: Annankatu 18, Helsinki, Finland

Document History

Version	Comment
Version 4.0	04/06/2014 <ul style="list-style-type: none">• Instructions for first time installation of Chesar 2.3• Instructions for upgrade from Chesar 2.0 / 2.0.1 / 2.1 / 2.2 to Chesar 2.3• Section 5 contains instructions how to configure Chesar to automatically upload a substance file from IUCLID. This feature is 'optional'.
Version 3.0	06/03/2013 <ul style="list-style-type: none">• Instructions for first time installation of Chesar 2.2• Instructions for upgrade from Chesar 2.0 / 2.0.1 / 2.1 to Chesar 2.2
Version 2.1	14/12/2012 <ul style="list-style-type: none">• Cosmetic changes to enhance readability.
Version 2.0	24/10/2012 <ul style="list-style-type: none">• Instructions for first time installation of Chesar 2.1• Instructions for upgrade from Chesar 2.0 / 2.0.1 to Chesar 2.1
Version 1.0	20/06/2012, First version

Table of Contents

1.	INTRODUCTION	6
1.1	About this Installation Manual.....	6
1.2	Chesar 2 background	6
1.3	Types of installation of Chesar	6
2	SYSTEM REQUIREMENTS / RECOMMENDATIONS	7
3	SECURITY	7
4	CHEGAR 2 'QUICK START'	8
5	CHEGAR 2 INSTALLATION INSTRUCTIONS	9
5.1	Do you already have Chesar 2.0/2.0.1/2.1 or 2.2 installed?	9
5.2	Download and extract the Chesar 2.3 files	10
5.3	Reusing the data that you created using Chesar 2.0 or 2.0.1 or 2.1 or 2.2	11
5.4	Create a desktop shortcut that will allow you to conveniently launch Chesar	12
5.5	OPTIONAL step: Configuring Chesar so that it can automatically upload substance files from IUCLID	14
6	USING CHEGAR 2.....	15
6.1	How to start Chesar 2	15
6.2	How to stop Chesar 2	18
6.3	How to change the default location of the Chesar Standalone database? ..	19
6.4	How to uninstall Chesar 2.....	20
7	TROUBLESHOOTING	21
7.1	Port not available / Changing the port number for Chesar Standalone	21
7.2	The Chesar launch window does not appear	23


1. INTRODUCTION

Thank you for choosing to install the Chesar 2 application. This document will guide you through the steps required to install and configure Chesar 2.3 **standalone** version. It covers:

- installing Chesar 2.3 when previously you had no Chesar 2 version installed
- installing Chesar 2.3 when previously you had an earlier version of Chesar 2 installed (e.g. 2.0 or 2.0.1 or 2.1 or 2.2)


1.1 About this Installation Manual

A one page 'Quick Start' installation guide can be found on page 8.

The  sign in this document is used to draw your attention to critical information.

Although this manual contains examples based on a specific version of Windows operating system, Chesar 2 will run on a wider range of operating systems. Please adapt the instructions to those appropriate to your specific operating system.

Many parameters given in this manual should be customised to your particular installation needs, for example file paths, names, usernames, and passwords.

	Have you previously installed and worked with an earlier version of Chesar 2 (e.g. 2.0 or 2.0.1 or 2.1 or 2.2) on your PC? If yes, all of your previously created data can be reused by Chesar 2.3. It is very important that you do not accidentally destroy any of your previously created data. You must make a backup of your existing Chesar 2.0 or 2.0.1 or 2.1 or 2.2 database before starting the Chesar 2.3 installation. Section 5.1 of this document explains how to do this.
--	--

1.2 Chesar 2 background

In year 2011 Chesar (version 1) was a plugin to IUCLID. The new Chesar application called "Chesar 2" is no longer a plugin of IUCLID. It is an independent application. The first step when using Chesar 2 is to import a substance file (.i5z) from IUCLID 5.4 or later. The import of this information can be done manually by exporting the substance from the IUCLID application (e.g. save to C: drive), followed by importing it in to Chesar 2 (e.g. upload from C: drive). Alternatively, if you have IUCLID Webservices installed, Chesar will be able to automatically upload the file directly from IUCLID.

1.3 Types of installation of Chesar

The Chesar 2 application can be installed on your PC (standalone version), or on a server which can be accessed by multiple users that are connected to your organisation's computer network (distributed version). In both cases, you will use a web browser to access the application, for example Internet Explorer or Mozilla Firefox or Chrome.

This installation manual concerns only the **standalone** package.

2 SYSTEM REQUIREMENTS / RECOMMENDATIONS

The software package for standalone installation already includes the application server (Jetty) and database (Derby) therefore there is no need for you to install an application server or database.

Chesar 2 standalone has been tested using the following:

Browsers¹:	Mozilla Firefox, Chrome, Internet Explorer 8 & 9. Chesar 2 does not work with Internet Explorer 7 or earlier. The browser must have the option 'java script <u>enabled</u> '.
Operating Systems:	Microsoft, Linux Chesar 2 does not support Mac OS.
Java:	Version 1.6 and 1.7

The following minimum system requirements are recommended:

Disk space:	750 Mb free space
RAM:	2 GB
CPU:	Intel Core 2 Duo, 2.4 GHz (or equivalent)

Please send us feedback via the ECHA online contact form (<https://echa.europa.eu/contact/helpdesk-contact-form>), in case you encounter problems when using Chesar 2.

3 SECURITY

The Chesar application contains a basic username / password feature aimed at reducing the risk of accidental modification of data. This functionality is not intended to protect against wilful or malicious attempts to gain access to or modify data. Chesar must be installed within a securely protected environment.

¹ With other browsers the Chesar 2 user interface might not get displayed as expected.

4 CHESAR 2 'QUICK START'

This page contains a summary of the installation procedure. The detailed procedure is explained in the subsequent chapters.



Have you previously installed and worked with an earlier version of Chesar 2 (e.g. 2.0 or 2.0.1 or 2.1 or 2.2) on your PC? If **yes**, it is very important that you do not accidentally destroy any of your previously created data.

Before proceeding with the installation you must navigate to the most recent of your previous installations of Chesar 2 (2.0 / 2.0.1 / 2.1 or 2.2) and make a copy of the folder named **chesar2-db** and all of its content. Then, store this copy somewhere safe outside of the Chesar installation folder. Detailed instructions explaining how you can do this can be found in section 5.1.

1. Download the **Chesar-standalone-2.3.0.zip** file from the Chesar website.
2. Extract the content of the **Chesar-standalone-2.3.0.zip** file in to a new folder that you have created dedicated to the installation of 2.3.0. (Do not overwrite any previous Chesar installations.)



Do you already have data that you had created while using an earlier version of Chesar 2 (2.0 or 2.0.1 or 2.1 or 2.2)? If **yes**, you can continue to work with the data that you had previously created. To do this:

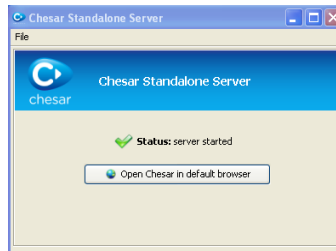
- a) navigate to the location of this earlier version of Chesar 2
- b) make a **copy** of the folder named **chesar2-db** (and all of its content)
- c) paste the copy of **chesar2-db** in to the new folder (**\Chesar-standalone-2.3**) that was automatically created when you extracted the content of Chesar-standalone-2.3.0.zip.

A more detailed explanation of the above steps is given in section 5.3.

3. Inside the folder that was automatically created called **\Chesar-standalone-2.3.0**, you will find a file named **startChesar.bat**. Create a 'shortcut' to startChesar.bat and place the shortcut somewhere convenient, for example on your desktop. (If you are running **Linux**, use instead the **startChesar.sh** and set the permissions to 'executable'.)

Congratulations! You have installed Chesar 2.3 standalone. To start the application:


4. Double click on the shortcut that you have created. A Standalone Server window will appear, as shown in the screenshot below.
5. Wait (for example 1 minute) until the Standalone Server window displays the message **server started**.



6. Select the button **Open Chesar in default browser**.
7. Clear the cache of your web browser (for example, from the browser menu select 'delete browsing history' / 'delete temporary internet files'), then select 'refresh'.
8. Start using Chesar 2 by logging in with the username: **admin** password: **admin**

5 CHESAR 2 INSTALLATION INSTRUCTIONS

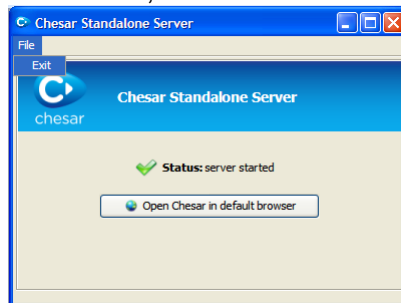
In this section you will find the same steps described in the 'Quick Start' section above, but in more detail and with screenshots.

 Two sections in this chapter are only relevant if you have previously installed an earlier version of Chesar 2 (e.g. 2.0 or 2.0.1 or 2.1 or 2.2).

5.1 Do you already have Chesar 2.0/2.0.1/2.1 or 2.2 installed?

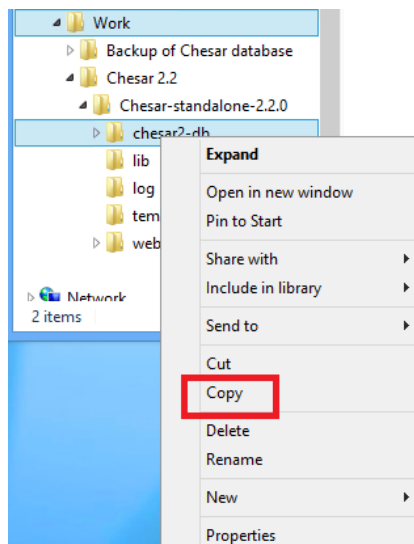
If you have **not** previously installed Chesar 2.0 or 2.0.1 or 2.1 or 2.2, then you can **skip** this section. Otherwise please continue to read this section.

1. If you currently have a browser open and are using a previous version of Chesar 2 (e.g. 2.0 or 2.0.1 or 2.1 or 2.2) standalone application, logout of Chesar. Next, look for the Chesar Standalone Server on your desktop. It should look like the window shown in the diagram below. Close the Chesar Standalone Server window by selecting File ⇒ Exit, as shown below.

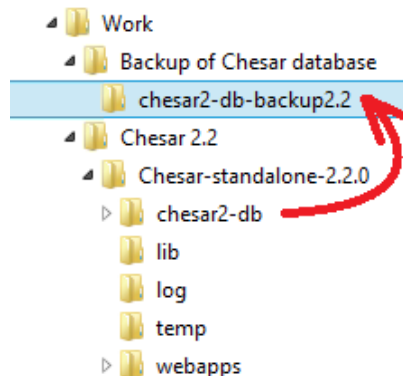


2. Make a **backup** of the data from your previous version of Chesar 2.

First, navigate to the location of the folder named **chesar2-db**. By default it is inside the folder in which the previous most recent Chesar 2 was installed (e.g. 2.0 or 2.0.1 or 2.1 or 2.2). Using the **COPY** function make a copy of the folder chesar2-db (and its contents).




Next, **PASTE** the copy of **chesar2-db** in to your personal folder somewhere outside of the Chesar installation folder. For example you could create a folder named "Backup of Chesar database" and **PASTE** the copy of the Chesar database in to this folder. You could then rename the copy of the database inside this backup folder, from chesar2-db, to **chesar2-db-backup-2.2**. You are ready to begin the Chesar 2.3 installation process.

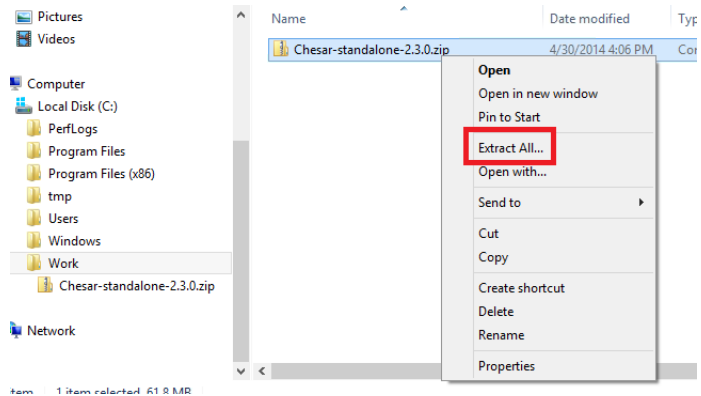


5.2 Download and extract the Chesar 2.3 files

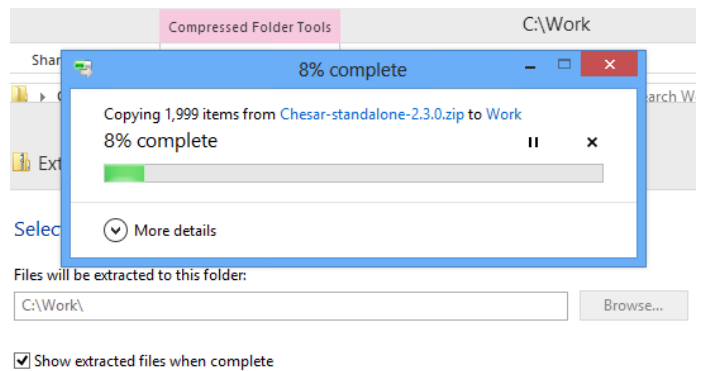
Download **Chesar-standalone-2.3.0.zip** from the Chesar website <http://chesar.echa.europa.eu/home>, and follow the steps below.

1.  If you have previously installed Chesar 2 (e.g. 2.0 or 2.0.1 or 2.1 or 2.2), **do not** overwrite this previous installation.

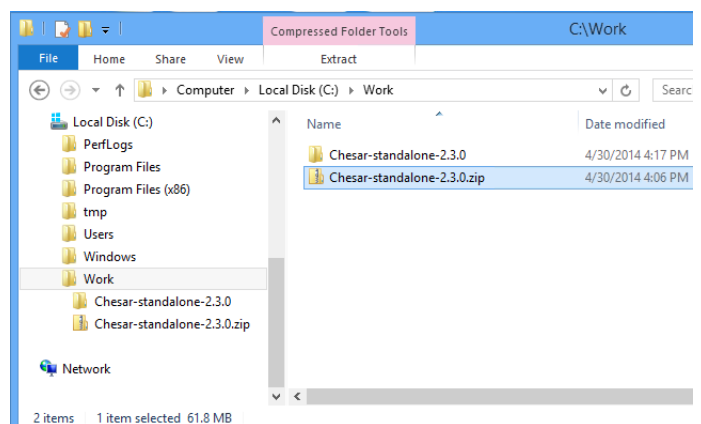
Unpack the zip file that you have downloaded by right clicking on the file and choosing the 'Extract' option.



2. The files will be extracted.



3. The result of the extraction will be a new folder called Chesar-standalone-2.3.0




5.3 Reusing the data that you created using Chesar 2.0 or 2.0.1 or 2.1 or 2.2

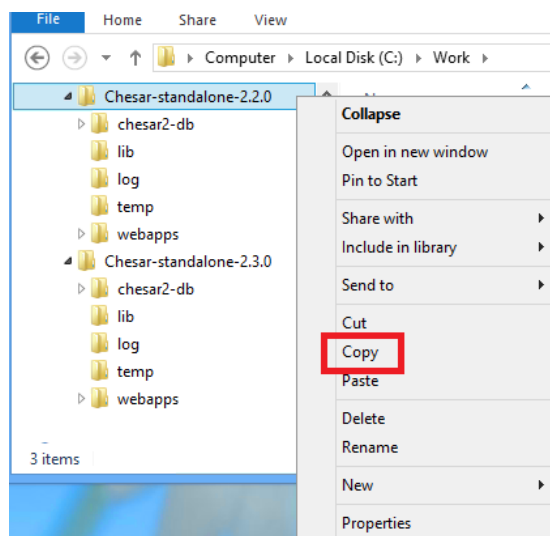
If you have **not** previously installed an earlier version of Chesar 2 (e.g. 2.0 or 2.0.1 or 2.1 or 2.2) then please **ignore** this section.

If you **have** previously installed an earlier version of Chesar 2 on your PC, all of your previously created data can be reused by Chesar 2.3. Please follow the steps below which explain how to:

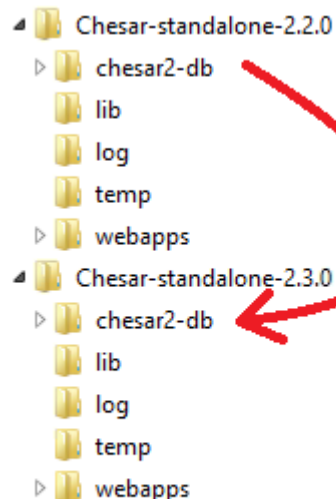
1. make a **copy** of the database from your most recent previous installation of Chesar
2. use the **copy** of your previous database to initialise your new version 2.3 of Chesar

1. On your PC, navigate to the folder in which your most recent previous version of Chesar 2 was installed and make a **COPY** of the database folder.

 This example shows what it would look like if your previous version of Chesar was 2.2 and you are upgrading to 2.3. The same procedure will also work if you are upgrading from e.g. 2.0 or 2.0.1 or 2.1 to 2.3.



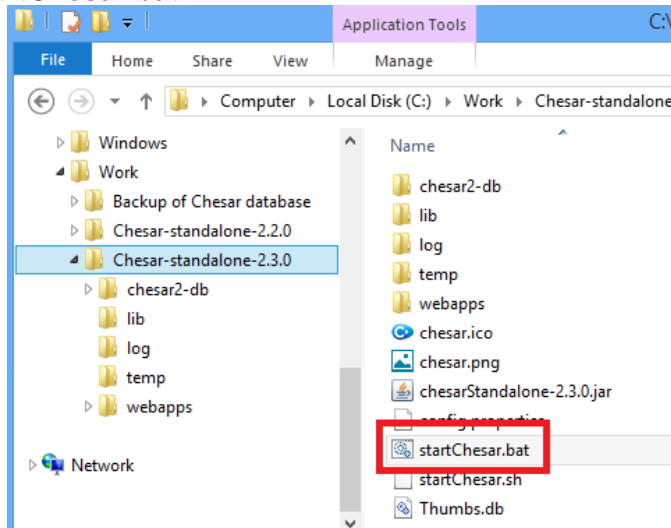
2. Navigate to the new folder that was created when you unpacked the zip file, named **\Chesar-standalone-2.3.0**. Inside this folder, **PASTE** the database folder.




At this point in the procedure, your PC still has your previous Chesar 2 (e.g. 2.0 or 2.0.1 or 2.1 or 2.2) standalone installation folder with your previous database, and in addition a NEW Chesar standalone folder **\Chesar-standalone-2.3.0** containing a copy of the database folder from your previous Chesar installation.

5.4 Create a desktop shortcut that will allow you to conveniently launch Chesar

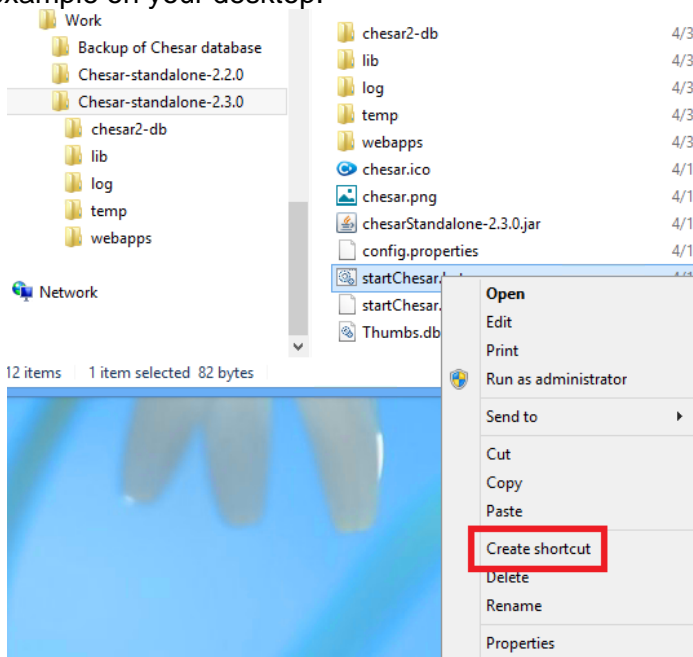
1. Inside the folder `\Chesar-standalone-2.3.0\` you will be able to see a file named **startChesar.bat**



 **Linux users:** Please use the **startChesar.sh** to launch Chesar 2. Remember to set the file permissions to 'executable' with the command: `chmod 500 startChesar.sh`

Some background information: The startChesar.bat file (or startChesar.sh in the case of Linux) simply allocates the appropriate amount of memory before launching the Chesar application.

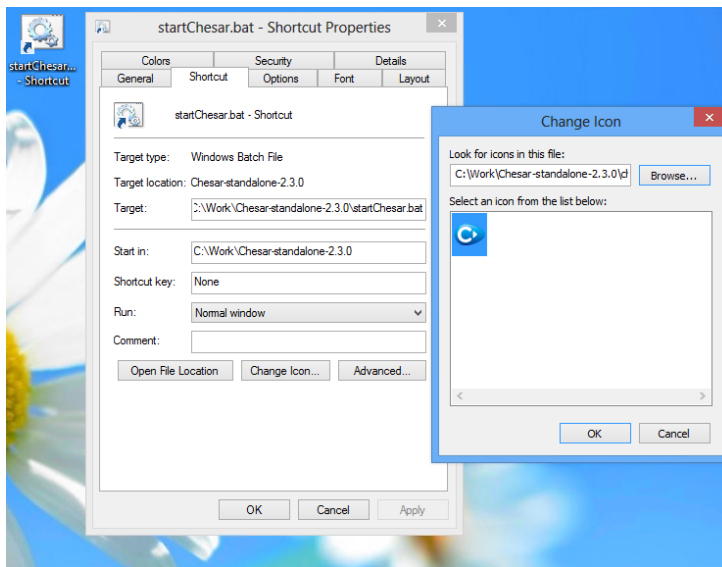
2. Create a 'shortcut' to this startChesar.bat file, and place the shortcut for example on your desktop.



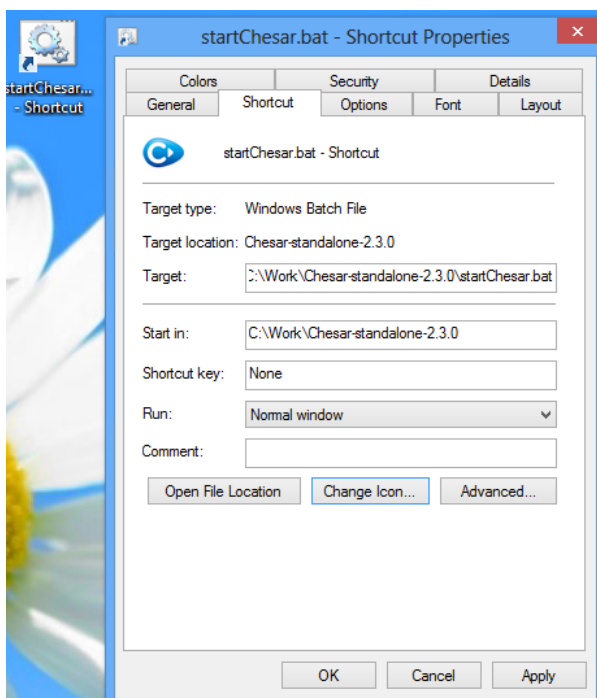
3. You can optionally associate an icon to the Chesar 2 shortcut. The following steps explain how to do this using the Windows 8 example. If you have a different operating system please consult the help pages for your specific operating system. For Linux users, please use the **chesar.png** file instead of the **chesar.ico** file.

Windows 8 example:

- Right-click on the new 'startChesar.bat' on your desktop.
- Select 'Properties' and go to the Shortcut tab shown below.
- Click the 'Change icon...' button. (If the warning appears, click 'OK' to choose an icon from the list.
- Browse the Chesar installation folder to locate the Chesar icon, which by default is located in **\Chesar-standalone-2.3.0** and choose **chesar.ico**



- When you have located the icon, press 'Apply' and 'OK'.



5.5 OPTIONAL step: Configuring Chesar so that it can automatically upload substance files from IUCLID



The following configuration is **OPTIONAL**.

Chesar 2.3 contains a new feature which automates the import of a substance file from IUCLID in to Chesar. Using this automatic import feature is 'optional'. If you wish to use it, you **must first** have **IUCLID web services** installed. Instructions on how to install IUCLID web services can be found here:

<http://iuclid.echa.europa.eu/index.php?fuseaction=home.downloadWebServices>

Next, after installing IUCLID web services, you can configure Chesar so that it knows how to access the IUCLID web services. The Chesar configuration file that you must modify is located inside the chesar 2.3 zip archive.

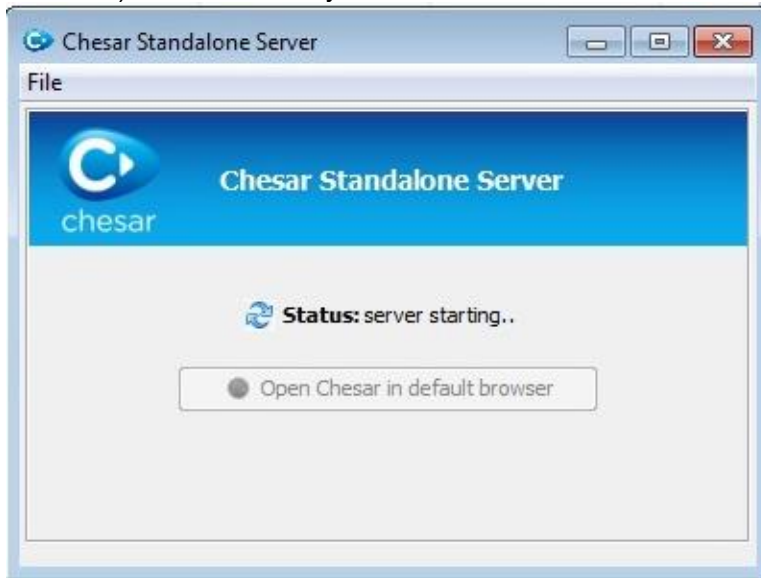
- Double-click on the **chesar 2.3 zip** archive file to open it.
- Inside the archive file, right click the file `\webapps\chesar\WEB-INF\classes\iuclidws.properties` and Edit it using for example, Notepad.
- Set the URL, username and password values to correspond to your **IUCLID web service** installation.

Finally, save and close the **iuclidws.properties** file. The system will ask you if you want to update the archive. Say 'Yes'.

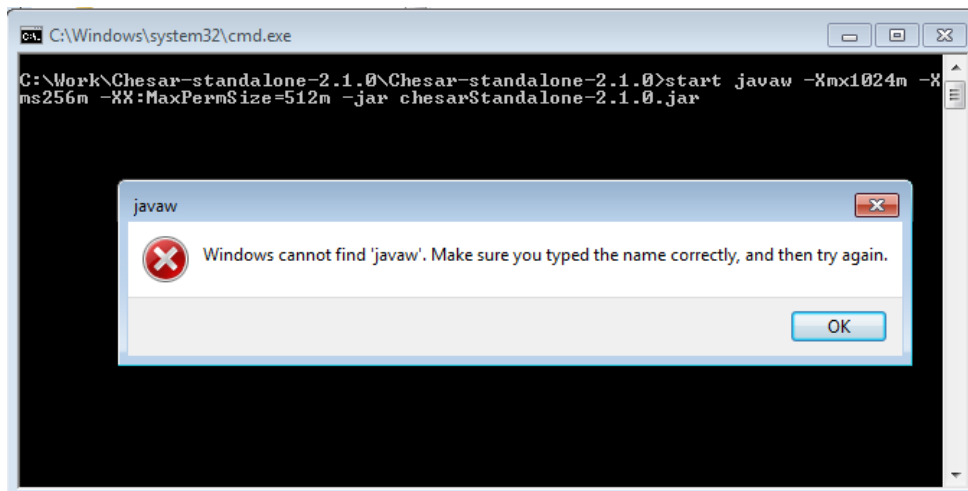
6 USING CHESAR 2

6.1 How to start Chesar 2

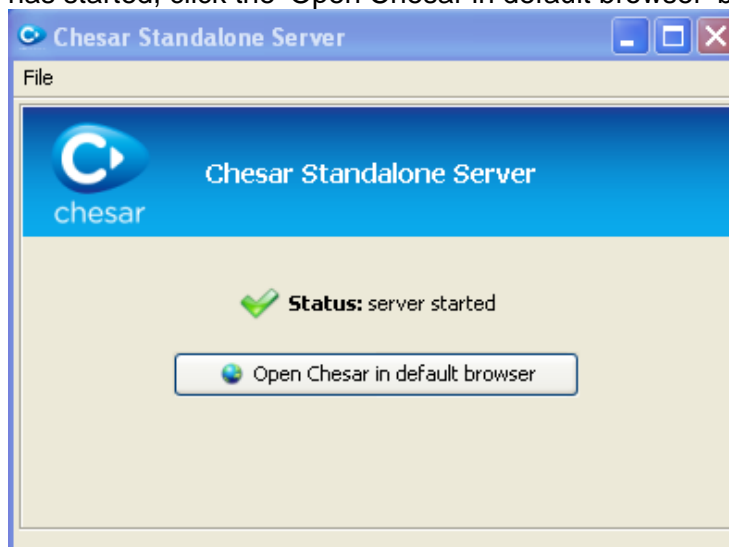
1. Double-click the shortcut on your desktop to launch the Chesar 2 standalone server. The Chesar starter window will appear and you must wait (for example 1 minute) until it informs you that the server has started.




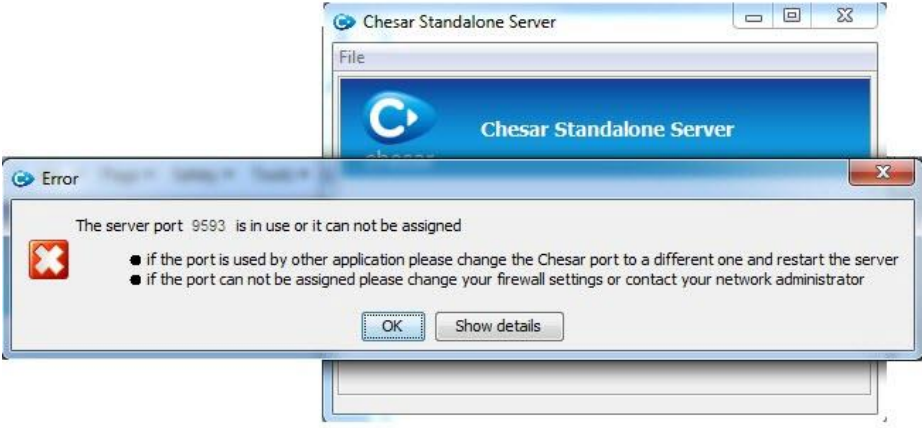
If this window does **not** appear but instead you receive a message similar to the one below indicating that the java path is not correctly configured, then please read the section 'The Chesar launch window does not appear', in the chapter **Troubleshooting** at the end of this document.



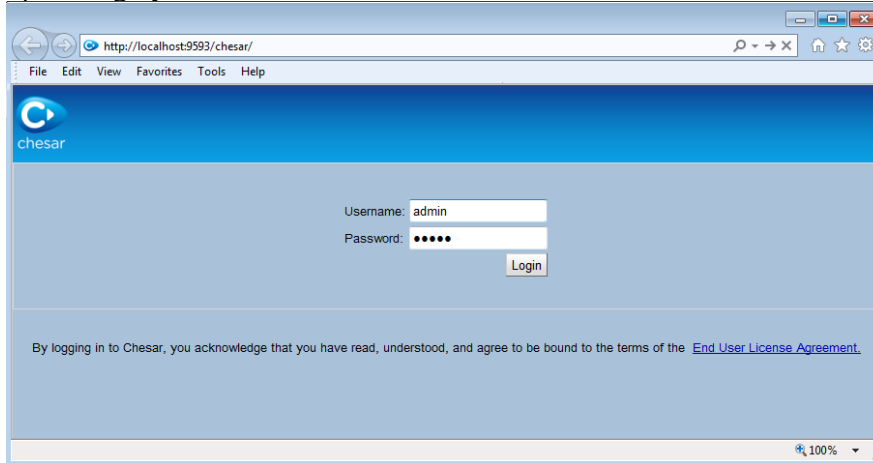
2. When the Chesar starter window informs you that the Chesar standalone server has started, click the 'Open Chesar in default browser' button.



 If you receive an error message similar to the one below, then please read the section 'Port not available' appear' in the chapter **Troubleshooting** at the end of this document.

A screenshot showing an error message dialog box overlaid on the Chesar Standalone Server window. The error dialog box has a red 'X' icon and the text: 'The server port 9593 is in use or it can not be assigned'. Below this text are two bullet points: '● if the port is used by other application please change the Chesar port to a different one and restart the server' and '● if the port can not be assigned please change your firewall settings or contact your network administrator'. At the bottom of the dialog box are 'OK' and 'Show details' buttons. The background window is the same 'Chesar Standalone Server' window as shown in the previous image.

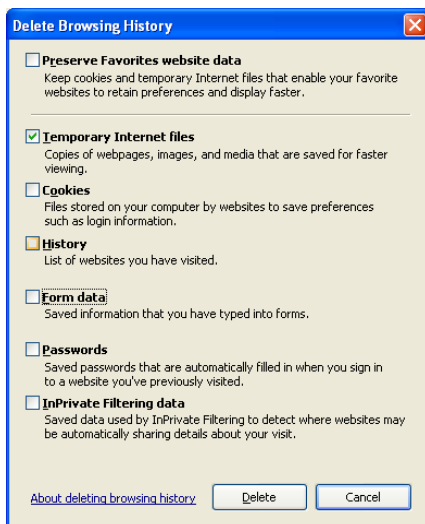
3. After you have selected the **Open Chesar in default browser** button, Chesar will open automatically in your default browser. Chesar detects the default browser that you have set within your MS Windows. If you want to change your default browser please do so according to the instructions for your version of operating system.



The browser will point to the URL address: **http://localhost:9593/chesar**



If you are upgrading from a previous version of Chesar 2 (e.g. 2.0 or 2.0.1 or 2.1 or 2.2), please clean the cache of your browser before logging in. This is because your browser stores some out of date information from the previous version of Chesar. For example, if you are using Internet Explorer, use the Delete browsing history option as shown below. After selecting **Delete**, press the browser's **refresh** button.




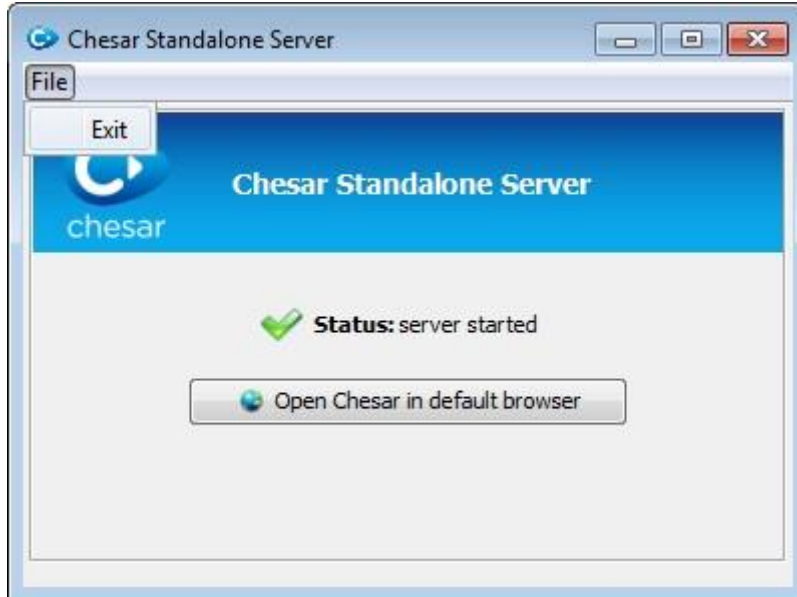
4. You are now ready to start using Chesar 2 standalone! The default account is:
username: **admin** password: **admin**



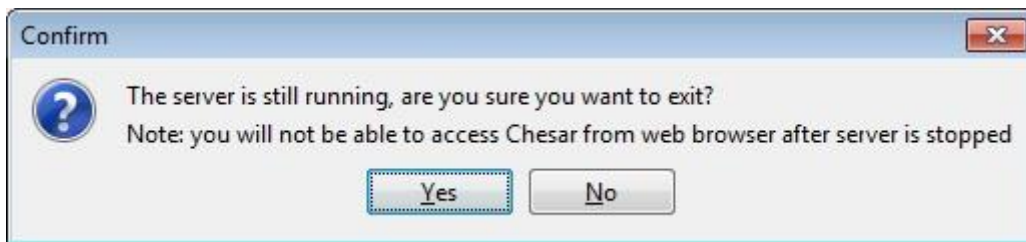
Please note that before you can create Library Items, you must first import a Legal Entity and link it to a User then log out and log back in again. For more details please see [User manual 7 User management](#).

6.2 How to stop Chesar 2

If you want to stop Chesar 2, go to the Chesar starter window and select File ⇒ Exit. (Alternatively you can select the Windows close icon  in the top right of the window.)



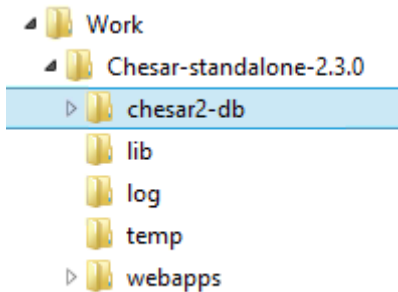
The system will ask for your confirmation to which you can reply **Yes**.



After a short time a brief message will appear informing you that the server has successfully shut down, then the starter window will automatically disappear. This shows that Chesar 2 standalone server has shutdown.

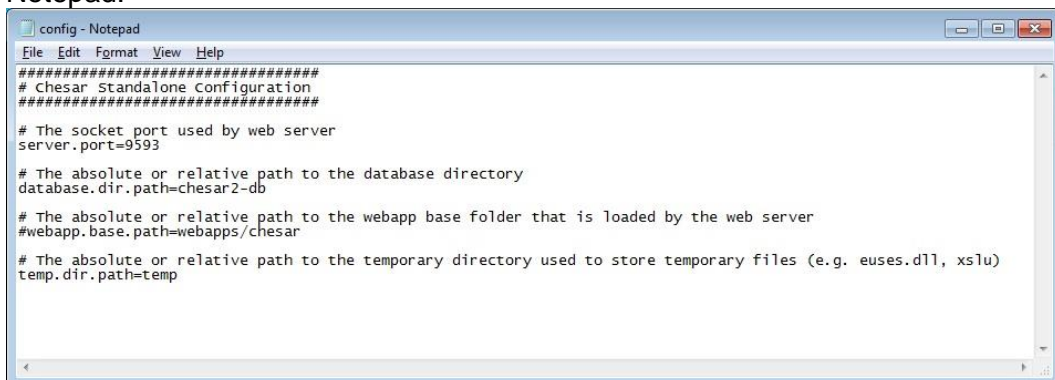
6.3 How to change the default location of the Chesar Standalone database?

Chesar 2 standalone uses a lightweight Java database called Derby. By default the Chesar 2 database will be under the folder in which you unzipped Chesar during the installation process, for example XYZ\Chesar-standalone-2.3.0\chesar2-db\.




You may change the default location prior to using Chesar 2 for the first time, however once you have started using Chesar 2 we advise **not** to alter this location. To change the default location:

1. In the Chesar directory please navigate to the location of the file: \Chesar2-standalone\config.properties
2. Right click the file called **config.properties** and Open/Edit using for example, Notepad.



3. Edit the value of **database.dir.path**, changing for example:
from database.dir.path=**chesar2-db**
to database.dir.path=**newfolder/newsubfolder**
4. Save the file.
5. Launch the Chesar standalone server, as described in the section 'How to start Chesar 2'.

6.4 How to uninstall Chesar 2

 Before uninstalling Chesar 2, if you want to keep the data that you have created for use on a future occasion you should export your work to a personal folder somewhere outside of the Chesar installation folder.

Please export each of your substances and all other data that you created in Chesar using the Chesar export functionality. You may additionally want to make a backup of your standalone database. To do so, copy the sub-folder (and contents) e.g. Chesar-standalone-2.3.0\chesar2-db\ , and store the copy somewhere outside of the Chesar installation folder.

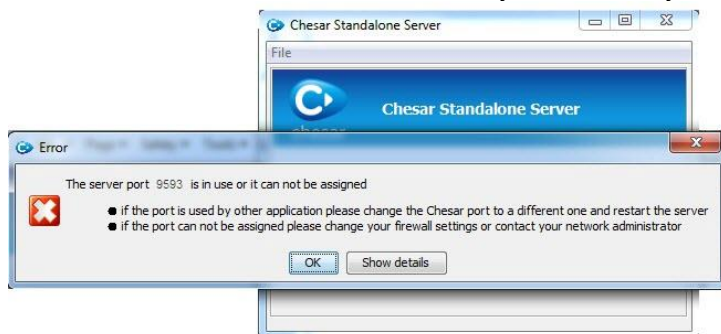
After you have made a copy or exported the data that you want to keep as described above, you can uninstall Chesar 2 by simply deleting the folder that was created during the original installation process during the unpacking of the Chesar 2 zip file. Assuming that you did not change the default location of the chesar2-db folder specified in the **configuration.properties** file, then the Chesar data will also be deleted.

7 TROUBLESHOOTING

7.1 Port not available / Changing the port number for Chesar Standalone

This section contains instructions which are slightly more technical than the instructions earlier in the manual. You may try them yourself, or you may wish to contact your ICT services department for assistance.

If the Chesar starter window informs you that 'The server port is in use or it can not be assigned' (as shown in the screenshot below), this means that the usual communication channel that is used by Chesar on your PC is not available.



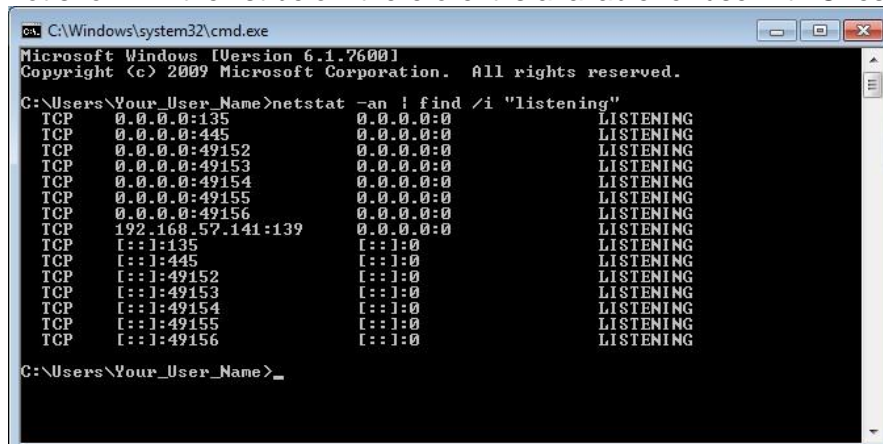
This may happen for example, because the port 9593 is used by another software program that is running on your PC, or because the port has been locked by your ICT services for security reasons.

If the port 9593 is already in use the Chesar 2 configuration file will need to be modified before the Chesar application will start. You should find a port that is not in use, and then update the Chesar configuration file with the new port number.

Firstly, open the Command Prompt. If you are using Windows, open a Command Prompt console (Start ⇒ Run ⇒ Open ⇒ type "cmd").

In the command line enter the following command so that you can see which ports are already being used: **netstat -an |find /i "listening"**

The port numbers shown (e.g. 0.0.0.0:135) are the ones already in use. You must choose a number that is **not shown**, for use with Chesar. For example, ":10000" is not shown in the list below therefore it is available for use with Chesar.



```
C:\Windows\system32\cmd.exe
Microsoft Windows [Version 6.1.7600]
Copyright (c) 2009 Microsoft Corporation. All rights reserved.

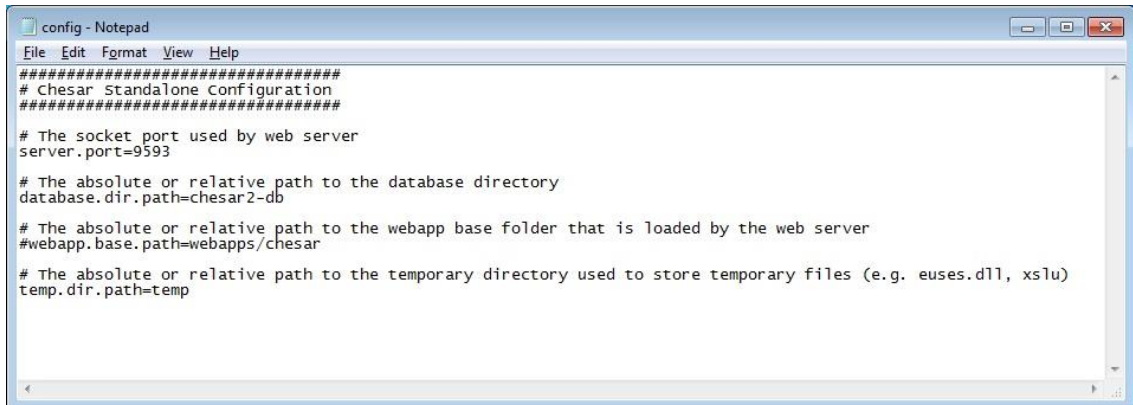
C:\Users\Your_User_Name>netstat -an | find /i "listening"
TCP    0.0.0.0:135          0.0.0.0:*          LISTENING
TCP    0.0.0.0:445         0.0.0.0:*          LISTENING
TCP    0.0.0.0:49152       0.0.0.0:*          LISTENING
TCP    0.0.0.0:49153       0.0.0.0:*          LISTENING
TCP    0.0.0.0:49154       0.0.0.0:*          LISTENING
TCP    0.0.0.0:49155       0.0.0.0:*          LISTENING
TCP    0.0.0.0:49156       0.0.0.0:*          LISTENING
TCP    192.168.57.141:139  0.0.0.0:*          LISTENING
TCP    [::]:135           [::]:*            LISTENING
TCP    [::]:445           [::]:*            LISTENING
TCP    [::]:49152         [::]:*            LISTENING
TCP    [::]:49153         [::]:*            LISTENING
TCP    [::]:49154         [::]:*            LISTENING
TCP    [::]:49155         [::]:*            LISTENING
TCP    [::]:49156         [::]:*            LISTENING

C:\Users\Your_User_Name>_
```

The Chesar that you downloaded was configured by default to use port **:9593**.

You must reconfigure Chesar so that it uses e.g. ":10000", instead of ":9593".

1. To do this, first ensure that the Chesar 2 starter window is closed, then in the Chesar directory, please navigate to the location of the file: \Chesar-standalone-2.3.0\config.properties
2. Right click the file called **config.properties** and Open/Edit using for example, Notepad.



3. Edit the value of **server.port**, replacing
server.port=9593 with for example, server.port=**10000**
(It may be convenient to choose a value in the range 1000 to 10000. Your ICT services should be able to provide assistance if necessary.)
4. Save the file.
5. Try to start Chesar one more time by double click the shortcut that you created. When the Chesar 2 starter window indicates that the server has started, select the **Open Chesar in default browser** button, as described in the section 'How to start Chesar 2'.

Note: If the procedure described above does not succeed, it might be that the permission rights on your computer are not allowing the opening of port connections on your operating system. Please ask for assistance from your ICT Services department. They can use the administrator rights to open a port, e.g. 10000.

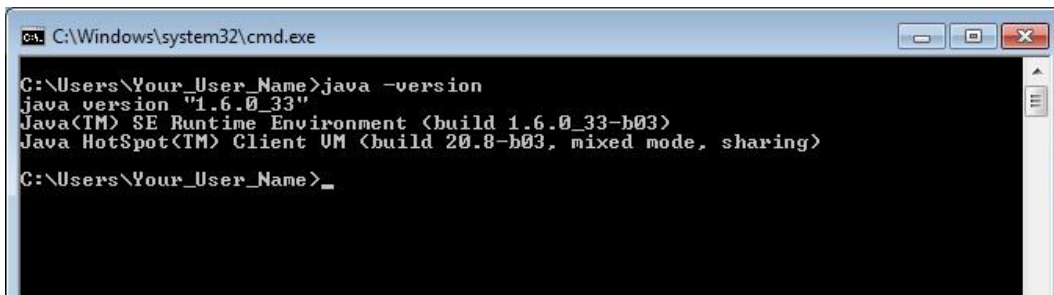
7.2 The Chesar launch window does not appear

This section contains instructions which are slightly more technical than the instructions earlier in the manual. You may try them yourself, or you may wish to contact your ICT services department for assistance.

If the Chesar launch window did not appear, it could be a problem with java. Please verify whether version 1.6 or 1.7 of Java (JRE) is installed by following the steps below:

1. If you are using Windows, open an MS Dos Command Line console (Start ⇒ Run ⇒ Open ⇒ type "**cmd**").
2. Enter the following to see which java version is in use: `java -version`

The following type of message should appear:



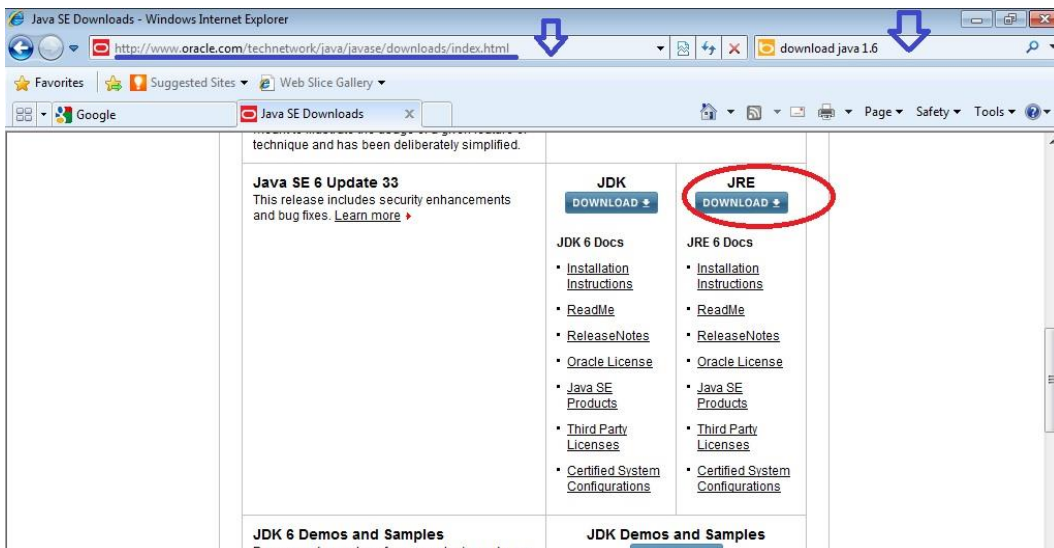
```
C:\Windows\system32\cmd.exe

C:\Users\Your_User_Name>java -version
java version "1.6.0_33"
Java(TM) SE Runtime Environment (build 1.6.0_33-b03)
Java HotSpot(TM) Client VM (build 20.8-b03, mixed mode, sharing)

C:\Users\Your_User_Name>
```

If a message similar to the one shown above does not appear, or if the version of Java is not 1.6 or 1.7, then a newer version of Java must be installed on your PC. Java can be downloaded from the Oracle website at

<http://www.oracle.com/technetwork/java/javase/downloads/index.html>

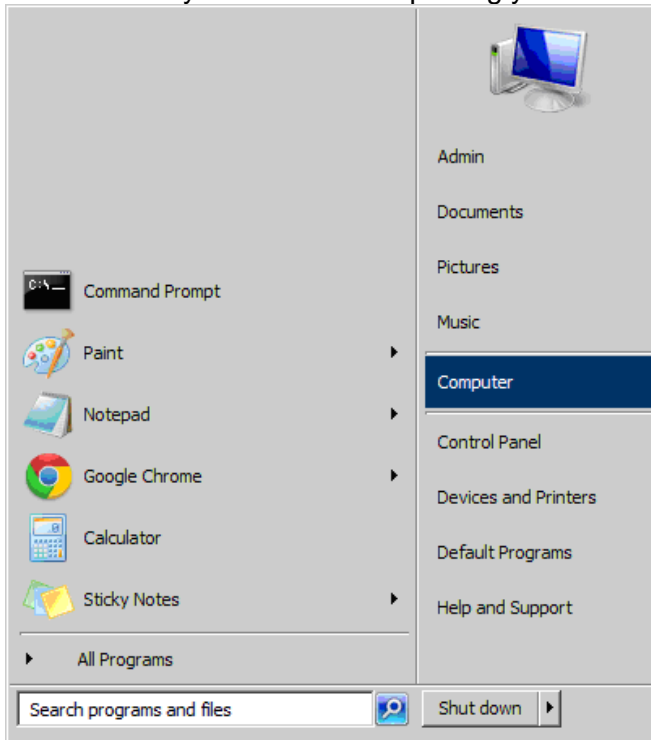


After installing Java please ensure that the Java path variable is correctly configured. For Windows operating systems you should update the Windows environment PATH variable to append the directory where Java was installed.

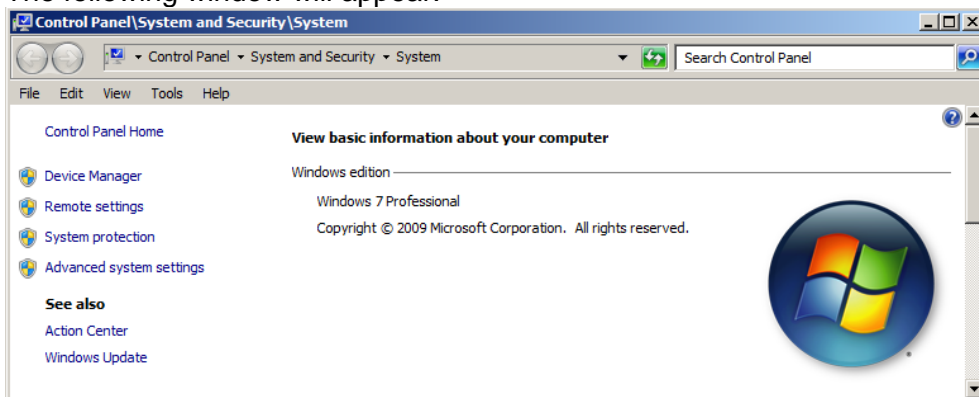
If you are using Windows 7, please follow the steps in section 6.2.1 below. If you are using Windows 8, follow the steps in section 6.2.2.

7.2.1 Instructions for Windows 7 Users

1. For Windows 7, this is done by selecting the Windows Start button on the bottom left of your screen then placing your mouse cursor over Computer.

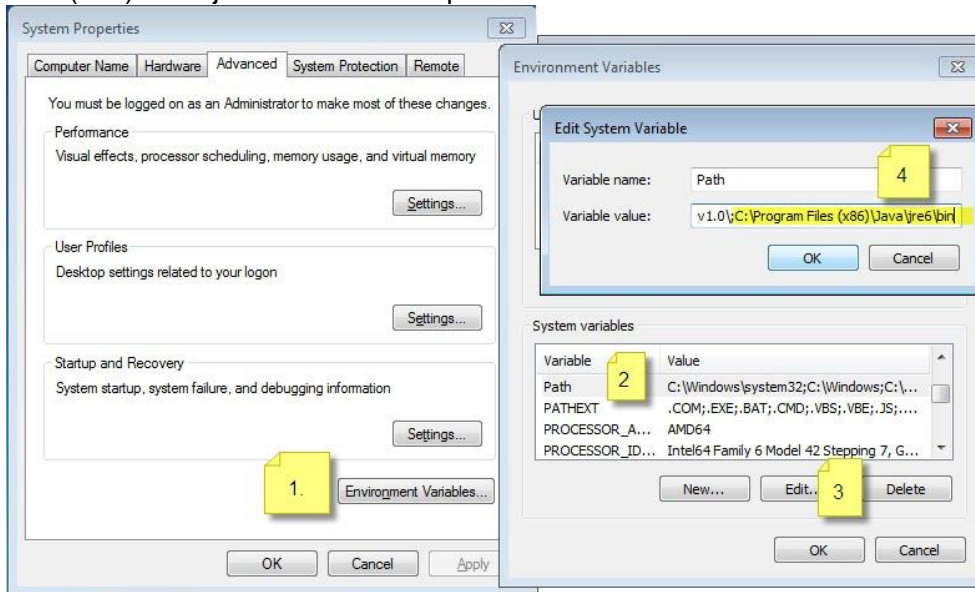


2. Right click on Computer and choose Properties from the menu that appears.
3. The following window will appear:



4. Select the Advanced System Settings from the menu on the left of the screenshot shown above. The System Properties will appear, as shown in the picture below.

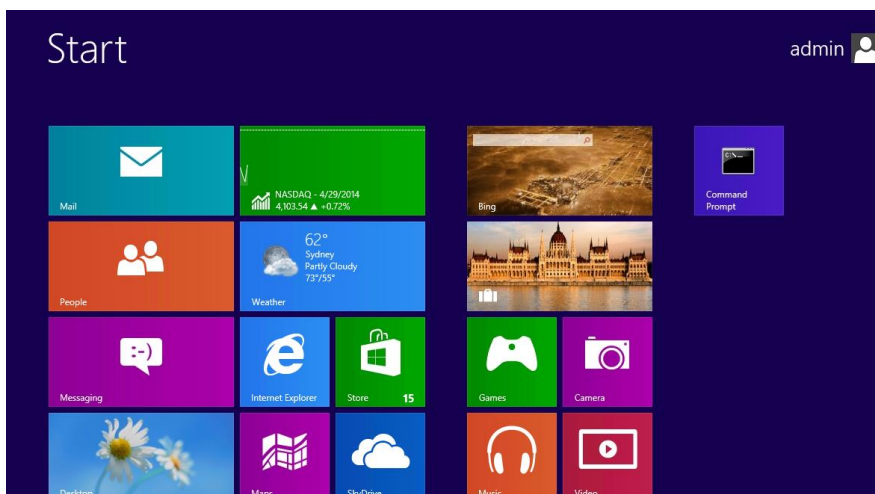
5. Press Environment Variables (marked 1), then in section System Variables select "Path" (2) and click Edit (3). Append to the "Variable value" (4) to the path where you have your java binaries e.g. "C:\Program Files(x86)\Java\jre6\bin" as in the picture below.

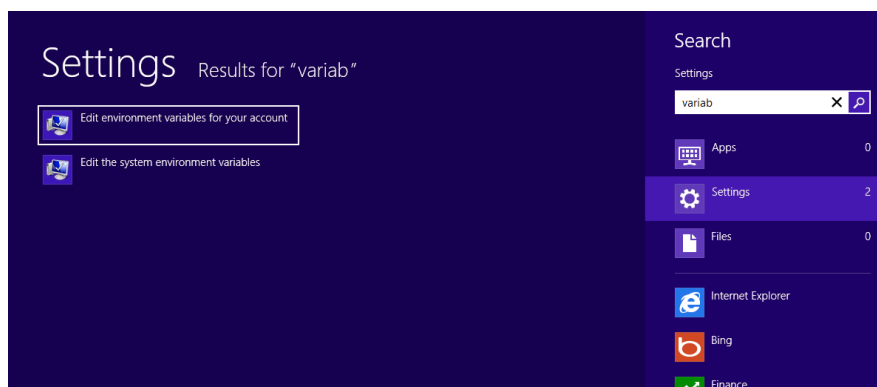


6. Press **OK** 3 times to save the environment variable changes.
7. Try to start Chesar one more time by double click the shortcut that you created. When the Chesar 2 starter window indicates that the server has started, select the **Open Chesar in default browser** button, as described in the section 'How to start Chesar 2'.

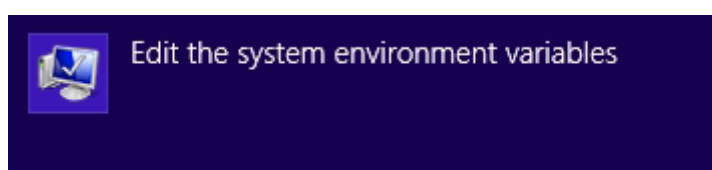
7.2.2 Instructions for Windows 8 Users

1. On the Start screen start typing "variable" and select "Settings"

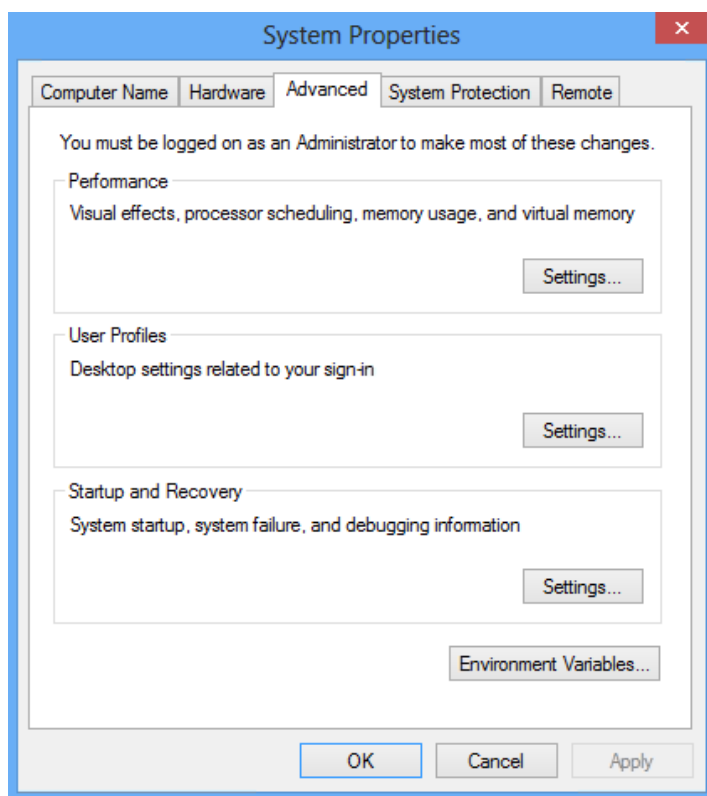




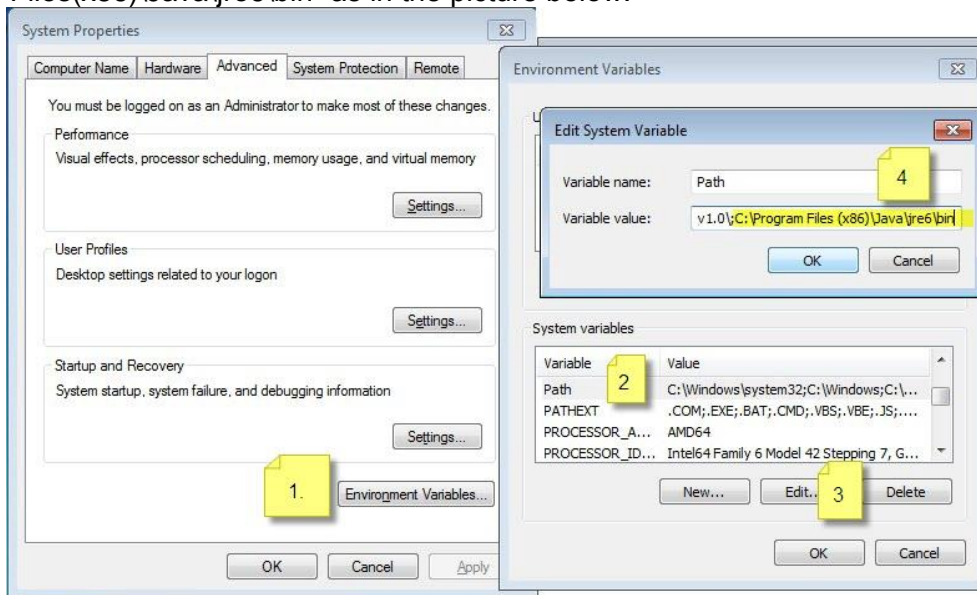
2. Click "Edit the system environment variables".



The "System Properties" window opens.



3. Press Environment Variables (marked 1), then in section System Variables select "Path" (2) and click Edit (3). Append to the "Variable value" (4) to the path where you have your java binaries e.g. "C:\Program Files(x86)\Java\jre6\bin" as in the picture below.



4. Press **OK** 3 times to save the environment variable changes.
5. Try to start Chesar one more time by double click the shortcut that you created. When the Chesar 2 starter window indicates that the server has started, select the **Open Chesar in default browser** button, as described in the section 'How to start Chesar 2'.

EUROPEAN CHEMICALS AGENCY
ANNANKATU 18, P.O. BOX 400,
FI-00121 HELSINKI, FINLAND
ECHA.EUROPA.EU



chesar