

# Chesar 3.9 Server installation manual



chesar

## Changes to this document

Date	Modification
23/05/2017	First version.
14/11/2017	Section 9 on establishing ECHA Cloud connection via company proxy added, update Chesar 3.2 to Chesar 3.3.
05/11/2018	Update to Chesar 3.4
26/11/2019	Inclusion of information on Derby Embedded, update to Chesar 3.5
18/01/2021	Updated information on compatible software, update to Chesar 3.6
10/11/2021	Update to Chesar 3.7
22/05/2023	Update to Chesar 3.8
04/06/2024	Update to Chesar 3.9

## Disclaimer

The information contained in this manual does not constitute legal advice. The European Chemicals Agency does not accept any liability with regard to the contents of this document. The European Chemicals Agency is entitled to modify or revise the document at any time with or without notice and with or without cause.

## Chesar 3.9 Server installation manual

ECHA ref.:	ECHA-24-H-08-EN
ISBN:	978-92-9468-389-2
Catalogue number:	ED-09-24-490-EN-N
DOI:	10.2823/171296
Publication date:	June 2024
Language:	en

© European Chemicals Agency, 2024

Cover page © European Chemicals Agency

Reproduction is authorised provided the source is fully acknowledged in the form

“Source: European Chemicals Agency, <http://echa.europa.eu/>”, and provided written notification is given to the ECHA Communication Unit ([publications@echa.europa.eu](mailto:publications@echa.europa.eu)).

ECHA invites interested parties to submit comments on this document which may be incorporated in future updates. These can be submitted via the Contact ECHA page at: <https://echa.europa.eu/contact>.

European Chemicals Agency

Mailing address: P.O. Box 400, FI-00121 Helsinki, Finland

Visiting address: Telakkakatu 6, Helsinki, Finland

## Table of Contents

<b>Changes to this document</b> .....	<b>2</b>
<b>Table of Contents</b> .....	<b>4</b>
<b>Table of Figures</b> .....	<b>5</b>
<b>Table of Tables</b> .....	<b>5</b>
<b>1. Introduction</b> .....	<b>6</b>
<b>2. Prerequisites</b> .....	<b>6</b>
2.1. Hardware requirements.....	6
2.2. Software requirements.....	7
2.3. Security .....	8
<b>3. Install Chesar 3.9 Server</b> .....	<b>8</b>
3.1. Set up database server .....	8
3.1.1. Derby Embedded.....	8
3.1.2. Derby Network Server database (Java DB Server).....	9
3.1.2.1. Install Derby Network Server.....	9
3.1.2.2. Create database for Chesar 3.9.....	10
3.1.3. Oracle Database.....	10
3.1.3.1. Install Oracle Database.....	10
3.1.3.2. Create database for Chesar 3.9.....	10
3.2. Set up application server (or servlet container).....	11
3.2.1. Install Tomcat.....	11
3.2.2. Install Glassfish.....	11
<b>4. Deploy Chesar 3.9</b> .....	<b>12</b>
<b>5. Launch Chesar 3.9</b> .....	<b>14</b>
<b>6. Backup</b> .....	<b>14</b>
<b>7. How to report problems to ECHA</b> .....	<b>14</b>
<b>8. Upgrade to Chesar 3.9 from Chesar 3.0, 3.1, 3.2, 3.3, 3.4, 3.5, 3.6, 3.7 or 3.8.....</b>	<b>15</b>
<b>9. Establishing ECHA Cloud connection via company proxy</b> .....	<b>16</b>
<b>Annex 1. Install Derby Network Server</b> .....	<b>18</b>
<b>Annex 2. Install Tomcat</b> .....	<b>20</b>

## Table of Figures

Figure 1: An example of setting environment variables and starting Derby Network Server...	9
Figure 2: Starting Derby Network Server with security constraints .....	10

## Table of Tables

Table 1: Hardware requirements .....	6
Table 2: Software requirements .....	7
Table 3: Default values of parameters for the configuration of Chesar 3.9 .....	12
Table 4: Values of parameters for the configuration of Chesar 3.9 with Network Derby default installation .....	12
Table 5: Opening the configuration file in Windows using 7-Zip.....	13

## 1. Introduction

Thank you for choosing to install the Chesar 3.9 Server application. Chesar is an application developed by the European Chemicals Agency (ECHA) to help companies to:

1. carry out their chemical safety assessments (CSAs)
2. prepare their chemical safety reports (CSRs) and exposure scenarios (ES) for communication in the supply chain.

This document guides you through the steps required to install and configure Chesar 3.9 so that it is available on a server so that more than one user can log in at the same time. It covers the following situations:

1. Creating a new installation of Chesar 3.9 Server;
2. Upgrading from the server version of Chesar 3.0, 3.1, 3.2, 3.3, 3.4, 3.5, 3.6, 3.7 or 3.8 to Chesar 3.9 Server.

For help with other scenarios, contact the ECHA helpdesk at:

<https://echa.europa.eu/contact>

Please be aware that files in the format of Chesar 2.3 cannot be imported directly in to Chesar 3.9. They must be imported in to Chesar 3.0, and then migrated to Chesar 3.9. Refer to the related installation manuals on the Chesar website:

<https://chesar.echa.europa.eu/download-chesar-3.0>



Please note that dependent on the complexity of the IT environment in to which Chesar is to be installed, the installation of Chesar 3.9 may require a high degree of IT technical expertise. We recommend that the installation and configuration is performed by suitably qualified personnel.

This manual provides a brief description of the essential information required to install and configure Chesar 3.9 Server. These instructions are not a substitute for the official documentation of the required third party softwares, for example, for Oracle databases, Java, Glassfish, Tomcat, and Derby. For full documentation, see the website of the respective vendor.

## 2. Prerequisites

### 2.1. Hardware requirements

Minimum hardware recommendations for a server installation with 2 to 10 simultaneous users and less than 500 substances:

**Table 1: Hardware requirements**

	Characteristics	Value
Application server	CPU/Cores	Dual Core/ 3.0 GHz
	Memory	4 GB
Database server	CPU/Cores	Dual Core/ 3.0 GHz
	Memory	4 GB

Network	Topology/Firewall/Proxy	Connection between database and application server (Gigabit wired)
Client machine (with browser)	CPU/Cores	Dual Core/ 2.0 GHz
	Memory	4 GB

## 2.2. Software requirements

Before installing Chesar 3.9 Server, the target machine must have the following installed:

1. Java;
2. A database server, e.g. Derby Network Server or Oracle; No extra installation is needed in case Chesar is deployed with the default Embedded Derby configuration.
3. An application server, e.g. Tomcat or Glassfish.

The Chesar 3.9 Server package has been tested using the following software:

**Table 2: Software requirements**

Software	Product	Version	Comments
Operating System	Microsoft Windows	7, 8, 10	We are not aware of any limitations that would prevent Chesar 3.9 from working on Windows Server 2008 or 2012.
	Linux		
Java	JRE	8	<a href="https://www.azul.com/downloads/zulu-community/">https://www.azul.com/downloads/zulu-community/</a> or <a href="http://www.oracle.com/technetwork/java/javase/downloads/index.html">http://www.oracle.com/technetwork/java/javase/downloads/index.html</a>
Database server	Network Derby Server (free)	10.12	<a href="http://db.apache.org/derby">http://db.apache.org/derby</a>
	Embedded Derby	10.12	Supplied with Chesar 3.9 Server
	Oracle (commercial)	12c, 19c	<a href="http://docs.oracle.com/en/database/">http://docs.oracle.com/en/database/</a>
Application server	Tomcat	8.0.38 8.5 9.0.7	<a href="http://tomcat.apache.org/">http://tomcat.apache.org/</a>
	Glassfish	4.1.1 <sup>1</sup>	<a href="https://glassfish.java.net/">https://glassfish.java.net/</a>
Browser	Edge		<a href="https://www.microsoft.com/en-us/edge">https://www.microsoft.com/en-us/edge</a>
	Mozilla Firefox		<a href="https://www.mozilla.org/en-GB/firefox/new/">https://www.mozilla.org/en-GB/firefox/new/</a>
	Chrome		<a href="https://www.google.com/chrome/browser/desktop/index.html">https://www.google.com/chrome/browser/desktop/index.html</a>

<sup>1</sup> Note that some additional actions are needed in this case, as described in section 3.2.2



Chesar 3.9 is not compatible with the Payara application server which is preconfigured with IUCLID 6.

## 2.3. Security

The Chesar application contains a basic username / password feature aimed at reducing the risk of accidental modification of data. This functionality is not intended to protect against wilful or malicious attempts to gain access to or modify data. Chesar must be installed within a secure environment.

## 3. Install Chesar 3.9 Server

Chesar 3.9 Server is compatible with various different types of databases and application servers. This installation manual explains in detail how to install Chesar 3.9 Server using either of the three combinations indicated below:

	Database		Application server
<b>1</b>	Derby Embedded (supplied with Chesar 3.9 Server)	&	Tomcat or Glassfish
<b>2</b>	Derby Network Server	&	Tomcat or Glassfish
or			
<b>3</b>	Oracle	&	Glassfish

The combinations of *Derby (Embedded or Network Server)* and *Tomcat* use only software that is free of charge.

### 3.1. Set up database server

#### 3.1.1. Derby Embedded

By default Chesar 3.9 Server is configured to use an Embedded Derby database.

For a new Chesar Server installation that uses Embedded Derby, no extra steps are needed apart from the Chesar-Server-`<Version>`.war deployment.

The database will be automatically started once Chesar is deployed and stop whenever the application is stopped or undeployed.

The path where the database folder is placed depends on the application server.

- For Tomcat server, chesar3 database folder can be found under server root.
- For Glassfish that is already configured to use IUCLID, all the databases will be placed under: `<GLASSFISH_ROOT>/glassfish/domains/domain1/database`
- For a new Glassfish installation, the chesar3 database folder will be found under: `<GLASSFISH_ROOT>/glassfish/domains/domain1/config`

It is important to identify these paths in order to use them during the database backup



process.

Please note that for a different database installation, the Chesar 3.9 application properties file should be updated accordingly (see deployment [section](#) below for instructions).

It is recommended for any previous Chesar installations using a Network Derby database, to continue with this infrastructure in order for the application data to be preserved. No database migration from Network to Embedded Derby will be automatically performed.

### 3.1.2. Derby Network Server database (Java DB Server)

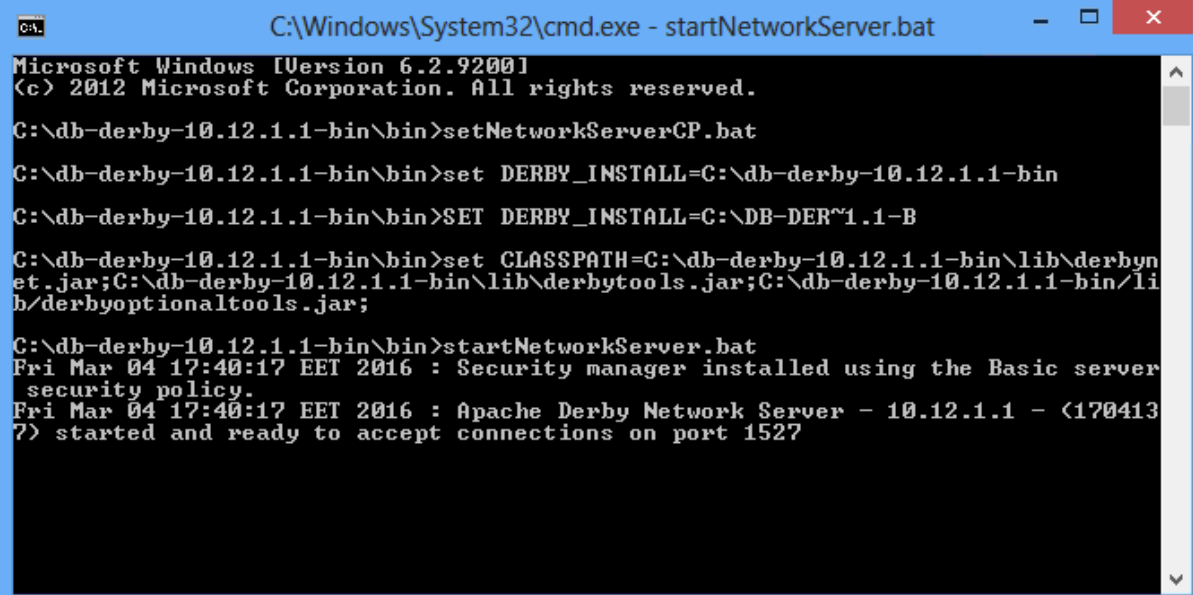
#### 3.1.2.1. Install Derby Network Server

For details, see [Annex: Install Derby Network Server](#).

Start *Derby Network Server* from the command line by running the following script that is located in the directory named `bin` that resides in the home directory of *Derby Network Server* (`%DERBY_HOME%\bin`):

```
startNetworkServer.bat
```

**Figure 1:** An example of setting environment variables and starting Derby Network Server



```
C:\Windows\System32\cmd.exe - startNetworkServer.bat
Microsoft Windows [Version 6.2.9200]
(c) 2012 Microsoft Corporation. All rights reserved.
C:\db-derby-10.12.1.1-bin\bin>setNetworkServerCP.bat
C:\db-derby-10.12.1.1-bin\bin>set DERBY_INSTALL=C:\db-derby-10.12.1.1-bin
C:\db-derby-10.12.1.1-bin\bin>SET DERBY_INSTALL=C:\DB-DER~1.1-B
C:\db-derby-10.12.1.1-bin\bin>set CLASSPATH=C:\db-derby-10.12.1.1-bin\lib\derbyne
et.jar;C:\db-derby-10.12.1.1-bin\lib\derbytools.jar;C:\db-derby-10.12.1.1-bin/li
b\derbyoptionaltools.jar;
C:\db-derby-10.12.1.1-bin\bin>startNetworkServer.bat
Fri Mar 04 17:40:17 EET 2016 : Security manager installed using the Basic server
security policy.
Fri Mar 04 17:40:17 EET 2016 : Apache Derby Network Server - 10.12.1.1 - (170413
?) started and ready to accept connections on port 1527
```

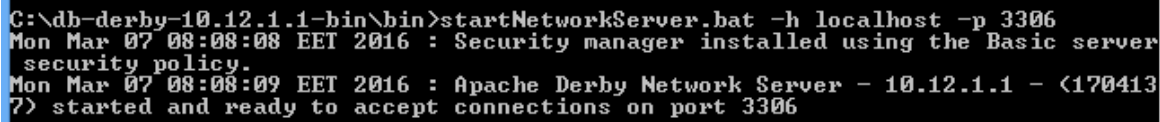
If you need to change the port under which Derby Network Server runs, and/or to restrict from where a connection can be made to the server, this can be done by passing the following arguments to the script:

```
startNetworkServer.bat -h <hostname> -p <portnumber>
```

For example the following command starts Derby Network Server on port 3306 and allows only local connections.

```
startNetworkServer.bat -h localhost -p 3306
```

**Figure 2: Starting Derby Network Server with security constraints**



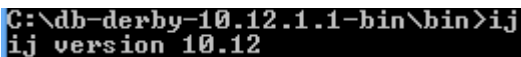
```
C:\db-derby-10.12.1.1-bin\bin>startNetworkServer.bat -h localhost -p 3306
Mon Mar 07 08:08:08 EET 2016 : Security manager installed using the Basic server
security policy.
Mon Mar 07 08:08:09 EET 2016 : Apache Derby Network Server - 10.12.1.1 - (170413
7) started and ready to accept connections on port 3306
```

### 3.1.2.2. Create database for Chesar 3.9

This step is needed in case of a new Network Derby installation. In case of Embedded Derby, the database will be automatically created during the first Chesar server deployment.

Start the database tool *ij* using the following command:

```
ij
```



```
C:\db-derby-10.12.1.1-bin\bin>ij
ij version 10.12
```

Create the database for Chesar 3.9 using a command of the form stated below:

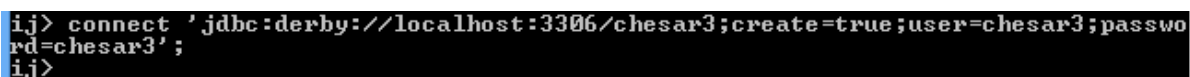
```
connect
```

```
'jdbc:derby://<database_server_url>:<port>/<database>;create=true;user=<u
sername>;password=<password>';
```

For example command below creates a database named *chesar3* and the user named *chesar3* that has a password *chesar3*:

```
connect
```

```
'jdbc:derby://localhost:3306/chesar3;create=true;user=chesar3;password=ch
esar3';
```



```
ij> connect 'jdbc:derby://localhost:3306/chesar3;create=true;user=chesar3;passwo
rd=chesar3';
ij>
```

### 3.1.3. Oracle Database

#### 3.1.3.1. Install Oracle Database

See <http://docs.oracle.com/en/database/> for the details on how to install an Oracle database.

#### 3.1.3.2. Create database for Chesar 3.9

Execute the following commands in SQL Plus:

```
create tablespace chesar3
datafile '/u02/oradata/orcl/chesar3.dbf'
```


```

size 100M
autoextend on
next 50M
maxsize 200M;
grant create session to chesar3 identified by "chesar3";
grant create table to chesar3;
grant create view to chesar3;
grant create sequence to chesar3;
alter user chesar3 quota unlimited on chesar3;
alter user chesar3 default tablespace chesar3;

```

## 3.2. Set up application server (or servlet container)

Although we have tested the server version of Chesar 3.9 with only Tomcat and Glassfish, we are not aware of any limitations that would prevent Chesar 3.9 from being deployed and run on some other Java EE compatible application server.

 Chesar 3.9 is compatible with IUCLID 6. It is possible to install both on the same machine, but please note that Chesar 3.9 is not compatible with Payara. We recommend running Chesar 3.9 within a separate instance of Glassfish/Tomcat from any used to run IUCLID 6 Server.

Please read the chapter below that is relevant to your choice of application server.

### 3.2.1. Install Tomcat

See [Annex: Install Tomcat](#) for the details on how to install Tomcat.







### 3.2.2. Install Glassfish

See <https://glassfish.java.net/> for the details on how to install Glassfish.

To be able to run Chesar 3.9 on Glassfish in combination with the use of Derby Embedded, the following changes will need to be made in Glassfish:

1. Delete the **derby.jar** and **derbyclient.jar** which are located at:

**<PATH\_TO\_GLASSFISH>\glassfish4\javadb\lib**

Name	Date modified	Type	Size
 derby	02-Nov-20 10:37 AM	Executable Jar File	3,031 KB
 derby.war	02-Nov-20 10:37 AM	WAR File	2 KB
 derbyclient	02-Nov-20 10:37 AM	Executable Jar File	571 KB
 derbyLocale_cs	02-Nov-20 10:37 AM	Executable Jar File	93 KB
 derbyLocale_de_DE	02-Nov-20 10:37 AM	Executable Jar File	105 KB
 derbvLocale es	02-Nov-20 10:37 AM	Executable Jar File	99 KB

2. Start Glassfish server.

The above steps are needed because Chesar-Server-3.9.0.war contains its own derby.jar and derbyclient.jar.

Note: if Glassfish server is running then it should be stopped first, then the two mentioned .jar files should be deleted and after that Glassfish should be restarted.

## 4. Deploy Chesar 3.9

Download the package for Chesar 3.9 Server (Chesar-Server-3.9.war) from the Chesar website at <https://chesar.echa.europa.eu/>. The file is a web archive (war) ready to be deployed in an application server.

Before deploying Chesar 3.9, consider whether its configuration needs to be changed. If Chesar will be installed with a new Embedded Derby database, there is no need to make any changes. The configuration is set in the file:

```
Chesar-Server-3.9.0.war\config\application.properties
```

**Table 3: Default values of parameters for the configuration of Chesar 3.9**

Parameter	Value
chesar.database.vendor	derby_standalone
chesar.database.url	chesar3
chesar.database.username	\${database.username}
chesar.database.password	\${database.password}
chesar.log.location	chesar3-logs
chesar.log.level	info
chesar.general.iuclidPluginUrl	/iuclid6-ext/api/ext/v1
chesar.general.csrDocbookTemplate	00_csr_main

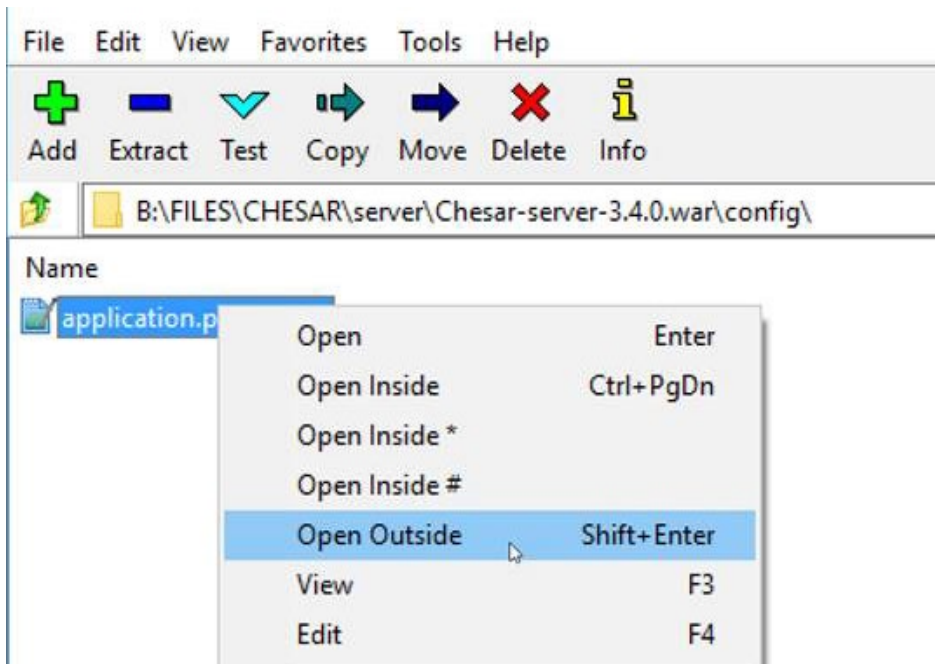
If Chesar will be deployed to use Oracle or Derby Network Server, the configuration should be changed accordingly. An example of the values used with the default installation of Derby Network Server is indicated below.

**Table 4: Values of parameters for the configuration of Chesar 3.9 with Network Derby default installation**

Parameter	Value
chesar.database.vendor	derby
chesar.database.url	jdbc:derby://localhost:3306/chesar3
chesar.database.username	chesar3
chesar.database.password	chesar3

An example of how to access the configuration file under Windows using 7-Zip is shown below. In the file browser, right-click on the war archive, select *7-Zip > Open archive*. Open the directory `config`, and then select *Open Outside*. After editing the file in your favourite editor, save it locally, and then drag and drop it in to the archive to replace the previous version.

**Table 5: Opening the configuration file in Windows using 7-Zip**



It is recommended to set your own value for *chesar.log.location*, otherwise the logs will be written to the current working directory; which in the case of Tomcat is:

```
<Tomcat-install-folder>\bin\chesar3-logs
```

The next step is to deploy the war archive to the application server. Follow the relevant instructions below.

**Deploy to Tomcat**

Copy the war file into:

```
<Tomcat-install-folder>\webapps
```

Chesar should then appear among the Applications. The value for Running should be true.

Applications					
Path	Version	Display Name	Running	Sessions	Commands
/	None specified	Welcome to Tomcat	true	0	Start Stop Reload Undeploy Expire sessions with idle ≥ 30 minute
/Chesar-Server-3.1.1	None specified		true	0	Start Stop Reload Undeploy

To launch Chesar, click on the name of the application in the column Path. Alternatively, point a browser at the following URL:

```
http://<host>:8080/Chesar-Server-3.9
```

In case of problems check the log files in the folder:

```
<Tomcat-install-folder>\logs
```

and

```
<Tomcat-install-folder>\chesar3-logs
```

### Deploy to Glassfish

Use the command *asadmin deploy* as below:

```
<Glassfish-install-folder>/bin/asadmin deploy --contextroot  
Chesar-Server-3.9 Chesar-Server-3.9.0.war
```

In case of problems check the log files in the folder:

```
<Glassfish-install-folder>\glassfish\domains\domain1\logs
```

## 5. Launch Chesar 3.9

Go to your browser and enter in its URL bar the following:

```
http://<host>:<port>/Chesar-Server-3.9
```

E.g.:

```
http://localhost:8080/Chesar-Server-3.9
```

On logging in to a fresh installation of Chesar 3.9 Server for the first time, use the default username and password *admin/admin*. User management is available under Box 7.

On logging in after an upgrade, the Users and data from before the upgrade should be accessible.

## 6. Backup

Chesar data is precious! In the same way as any other application, it is prudent to take periodic backups of the data as frequently as is practically possible. Store your backups in a safe location. Without a backup, you are at risk of losing data.

Please refer to the documentation of your database vendor (Oracle or Derby) on how to take valid database backups.

## 7. How to report problems to ECHA

In case you encounter problems or wish to give other feedback, please use the ECHA online contact form: <https://echa.europa.eu/contact>.

If the issue you are reporting concerns a problem with installing or running Chesar, please collect the following and attach it to a helpdesk ticket submitted at the address above:

1. the Chesar log files which can be found at the location configured in the file *application.properties*, see section [Deploy Chesar 3.9](#),  
e.g.: `c:/logs/chesar3-logs`
2. the Application server log files

- a. Tomcat log files: can be found at:  
 ...\`<Tomcat-install-folder>`\logs
- b. Glassfish log files: can be found at  
 ...\`<Glassfish-install-folder>`\glassfish\domains\domain1\logs

If the issue you are reporting concerns a problem with migrating data, please collect and send us the migration log files which can be found at:

...\code>chesar-migration-tool-1.0.0\chesar3-logs

## 8. Upgrade to Chesar 3.9 from Chesar 3.0, 3.1, 3.2, 3.3, 3.4, 3.5, 3.6, 3.7 or 3.8

To upgrade Chesar 3.0, 3.1, 3.2, 3.3, 3.4, 3.5, 3.6, 3.7 or 3.8 to Chesar 3.9, carry out the following steps:

1. Make sure that you have valid backups of the data for Chesar 3.0 / 3.1 / 3.2 / 3.3 / 3.4 / 3.5 / 3.6 / 3.7 / 3.8, and IUCLID 6;
2. Stop Chesar 3.0 / 3.1 / 3.2 / 3.3 / 3.4 / 3.5 / 3.6 / 3.7 / 3.8 by stopping the underlying application server, i.e. either Tomcat or Glassfish;
3. Make a copy of the file `application.properties` from the installation of Chesar 3.0 / 3.1 / 3.2 / 3.3 / 3.4 / 3.5 / 3.6 / 3.7 / 3.8;
4. If Embedded Derby is used, a backup copy of the folder containing the database should also be taken at this point.
5. Un-deploy the Chesar 3.0 / 3.1 / 3.2 / 3.3 / 3.4 / 3.5 / 3.6 / 3.7 / 3.8 application from the application server i.e. either Tomcat or Glassfish as follows:

### Tomcat

Use the Tomcat Web Application Manager to first stop, and then undeploy, Chesar 3.0 / 3.1 / 3.2 / 3.3 / 3.4 / 3.5 / 3.6 / 3.7 / 3.8, as shown below:



#### Tomcat Web Application Manager

Message:

---

**Manager**

[List Applications](#)      [HTML Manager Help](#)      [Manager Help](#)

---

**Applications**

Path	Version	Display Name	Running	Sessions	Commands
/	None specified	Welcome to Tomcat	true	0	Start <input type="button" value="Stop"/> <input type="button" value="Reload"/> <input type="button" value="Undeploy"/> Expire sessions with idle ≥ 30 minutes
/Chesar-Server-3.0.0	None specified		true	0	Start <input type="button" value="Stop"/> <input type="button" value="Reload"/> <input type="button" value="Undeploy"/> Expire sessions with idle ≥ 30 minutes
					Start <input type="button" value="Stop"/> <input type="button" value="Reload"/> <input type="button" value="Undeploy"/>

### Glassfish

List all applications to see the exact name of the Chesar 3.0 / 3.1 / 3.2 / 3.3 / 3.4 / 3.5 / 3.6 / 3.7 / 3.8 application.

```
<Glassfish-install-folder>/bin/asadmin list-applications
```

```
Chesar-Server-3.0.0:3.0.1-79c6747a2b4b7afcbd8ae00abc68cccb39dbb97f <web>
```

```
Command list-applications executed successfully.
```

Un-deploy the Chesar 3.0 / 3.1 / 3.2 / 3.3 / 3.4 / 3.5 / 3.6 / 3.7 / 3.8 application listed above. An example command is given below:

```
<Glassfish-install-folder>/bin/asadmin undeploy Chesar-Server-3.0.0:3.0.1-79c6747a2b4b7afcbd8ae00abc68cccb39dbb97f
```

```
Command undeploy executed successfully.
```

**Warning:** do not uninstall or delete the application server software.

For example, if you have installed Chesar 3.0 / 3.1 / 3.2 / 3.3 / 3.4 / 3.5 / 3.6 / 3.7 / 3.8 and IUCLID 6 under the same instance of Glassfish, and the IUCLID 6 has the default database setup, deleting Glassfish would delete IUCLID 6 *and* its database.

In the same sense, if Chesar uses an Embedded Derby database, deleting Glassfish or Tomcat would delete the Chesar database as well.

6. Deploy Chesar 3.9 as described in the Chapter 4 [Deploy Chesar 3.9](#) of this manual. Configure the database connection properties of Chesar 3.9 so that it points to the database of Chesar 3.0 / 3.1 / 3.2 / 3.3 / 3.4 / 3.5 / 3.6 / 3.7 / 3.8. The values of the database connection properties are in the version of the file `application.properties` from the installation of 3.0 / 3.1 / 3.2 / 3.3 / 3.4 / 3.5 / 3.6 / 3.7 / 3.8.
7. Run Chesar 3.9, log in, and then check the data. Check the log files to make sure there are no reported errors.

## 9. Establishing ECHA Cloud connection via company proxy

If you would like to connect Chesar 3.9 to IUCLID hosted in the ECHA cloud via a company proxy, first collect the following information:

- Proxy Host;
- Proxy Port.

If the proxy requires authentication the following will also be needed:

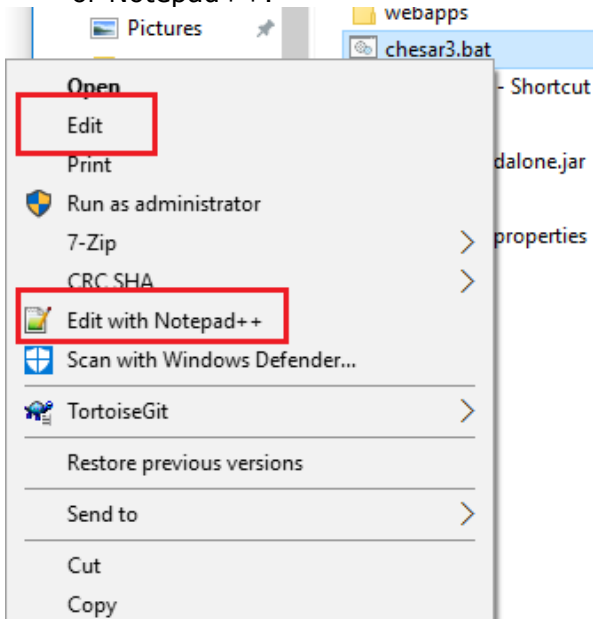
- Proxy User;
- Proxy Password.

In most cases these are the same credentials you use to log in to your workstation. After that follow the steps below:

- 1) Stop Chesar 3.



- 2) In a folder where Chesar 3 is installed find chesar3.bat. Create a backup copy of the file. Then right click on the file it and open it for editing with a text editor like Notepad or Notepad++.



- 3) Delete the existing contents and paste the following.

```
start jre/bin/javaw -Xmx1024m -Xms256m -XX:+HeapDumpOnOutOfMemoryError -
Dhttp.proxyHost=PROXY_HOST -Dhttp.proxyPort=PROXY_PORT -Dhttps.proxyHost=PROXY_HOST -
Dhttps.proxyPort=PROXY_PORT -Dhttp.proxyUser=PROXY_USER -
Dhttp.proxyPassword=PROXY_PASSWORD -jar chesar-standalone.jar
```

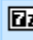
- 4) Replace PROXY\_HOST, PROXY\_PORT, PROXY\_USER and PROXY\_PASSWORD with your own values.
- 5) Save chesar3.bat
- 6) Re-start Chesar and attempt to connect to the IUCLID Cloud.

## Annex 1. Install Derby Network Server


Download *Derby Network Server*:

[http://db.apache.org/derby/derby\\_downloads.html](http://db.apache.org/derby/derby_downloads.html)

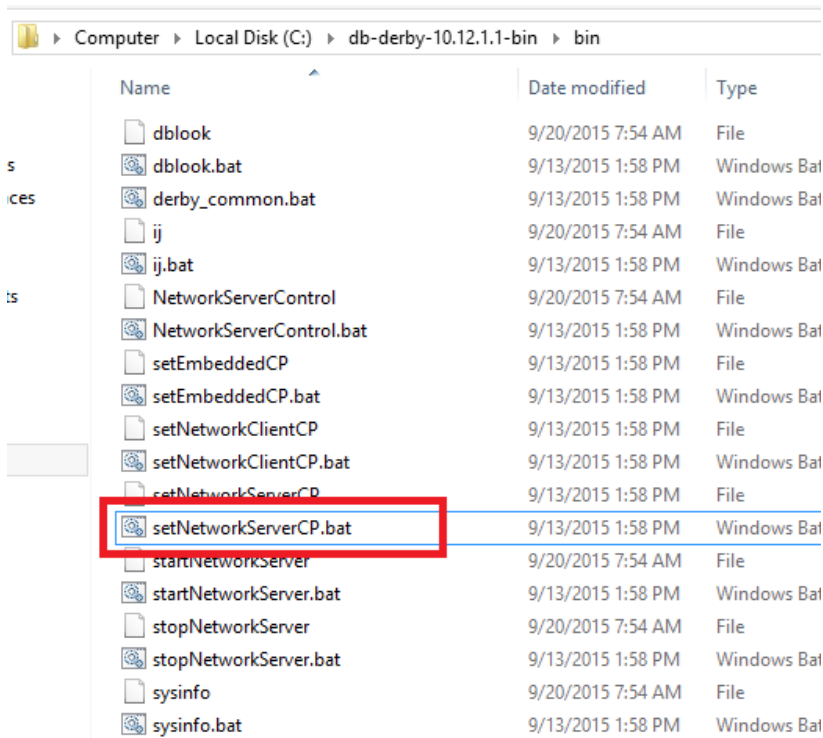
Version 10 should be used, i.e. 10.12.1.1:

 db-derby-10.12.1.1-bin.zip

The installation package contains a folder. Extract this folder to an appropriate location (e.g. C:\).

 db-derby-10.12.1.1-bin

An example of the contents of the extraction is shown below. Edit the file named `setNetworkServerCP.bat`.



Name	Date modified	Type
dblook	9/20/2015 7:54 AM	File
dblook.bat	9/13/2015 1:58 PM	Windows Bat
derby_common.bat	9/13/2015 1:58 PM	Windows Bat
ij	9/20/2015 7:54 AM	File
ij.bat	9/13/2015 1:58 PM	Windows Bat
NetworkServerControl	9/20/2015 7:54 AM	File
NetworkServerControl.bat	9/13/2015 1:58 PM	Windows Bat
setEmbeddedCP	9/13/2015 1:58 PM	File
setEmbeddedCP.bat	9/13/2015 1:58 PM	Windows Bat
setNetworkClientCP	9/13/2015 1:58 PM	File
setNetworkClientCP.bat	9/13/2015 1:58 PM	Windows Bat
setNetworkServerCP	9/13/2015 1:58 PM	File
setNetworkServerCP.bat	9/13/2015 1:58 PM	Windows Bat
startNetworkServer	9/20/2015 7:54 AM	File
startNetworkServer.bat	9/13/2015 1:58 PM	Windows Bat
stopNetworkServer	9/20/2015 7:54 AM	File
stopNetworkServer.bat	9/13/2015 1:58 PM	Windows Bat
sysinfo	9/20/2015 7:54 AM	File
sysinfo.bat	9/13/2015 1:58 PM	Windows Bat

Set the value of the parameter named `DERBY_INSTALL` to the path of the installation folder that was extracted in the previous step. An example is shown below.

```
set DERBY_INSTALL=C:\db-derby-10.12.1.1-bin
@if "%DERBY_HOME%"==" " set DERBY_HOME=%DERBY_INSTALL%
@if "%DERBY_HOME%"==" " goto noderbyhome

@FOR %X in ("%DERBY_HOME%") DO SET DERBY_INSTALL=%X

set CLASSPATH=%DERBY_HOME%\lib\derbynet.jar;%DERBY_HOME%\lib\derbytools.jar;%DERBY_HOME%\lib\derbyoptionaltools.jar;%CLASSPATH%
goto end

:noderbyhome
@echo DERBY_HOME or DERBY_INSTALL not set. Set one of these variables
@echo to the location of your Derby installation.

:end
```

After editing and saving the script file, run it from the command line:

```
setNetworkServerCP.bat
```

## Annex 2. Install Tomcat

Download Tomcat 8 or 9 that is compatible with Chesar

<http://tomcat.apache.org/>

An example of a Windows installer is shown below:


8.0.32

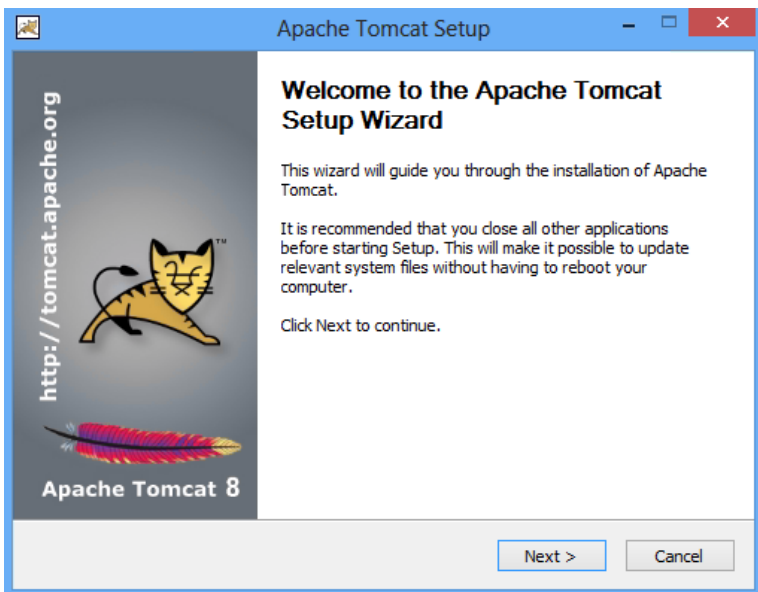
Please see the [README](#) file for packaging information. It explains what every

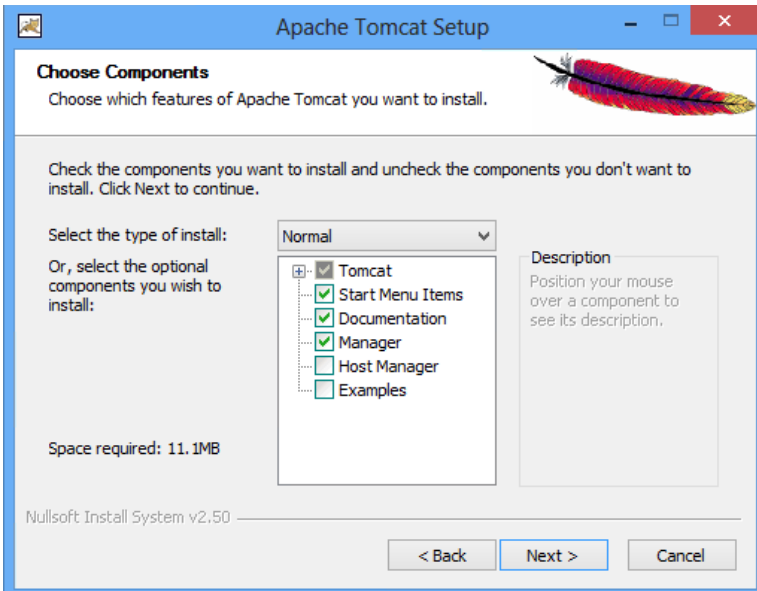
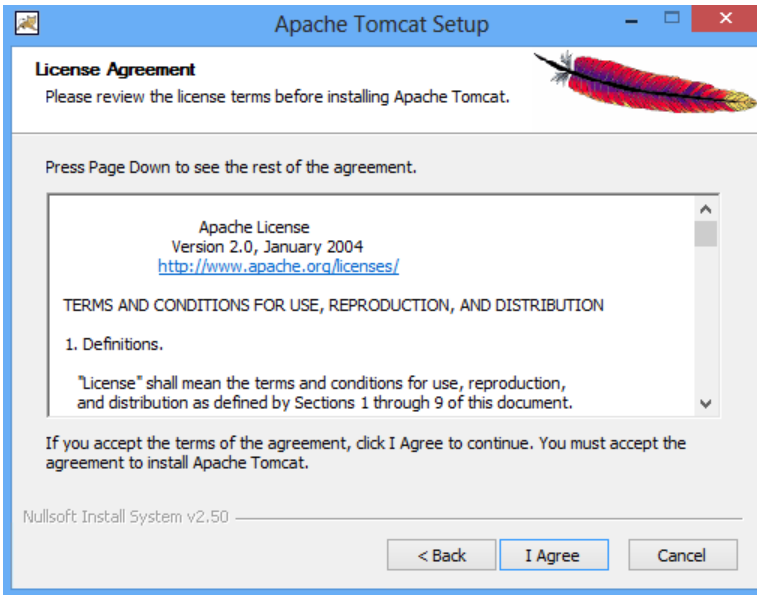
### Binary Distributions

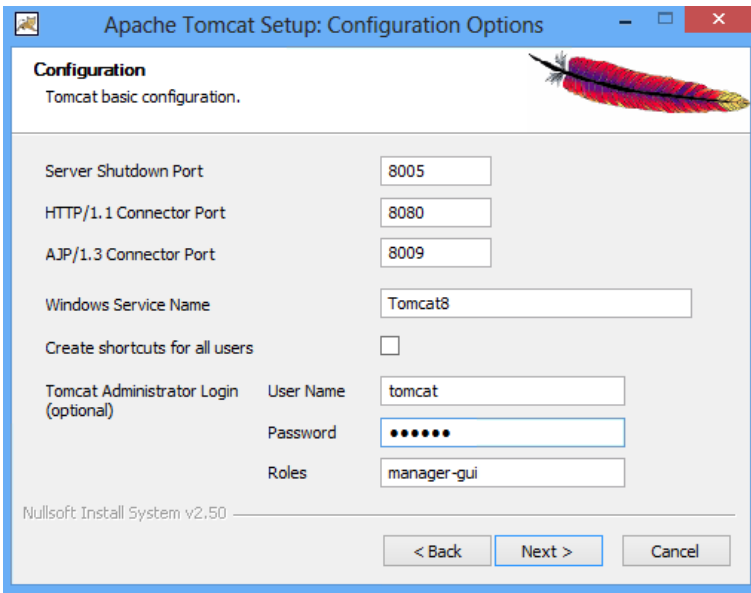
- Core:
  - [zip \(pgp, md5, sha1\)](#)
  - [tar.gz \(pgp, md5, sha1\)](#)
  - [32-bit Windows zip \(pgp, md5, sha1\)](#)
  - [64-bit Windows zip \(pgp, md5, sha1\)](#)
  - [64-bit Itanium Windows zip \(pgp, md5, sha1\)](#)
  - [32-bit/64-bit Windows Service Installer \(pgp, md5, sha1\)](#)

To start the installation, double click the installer.

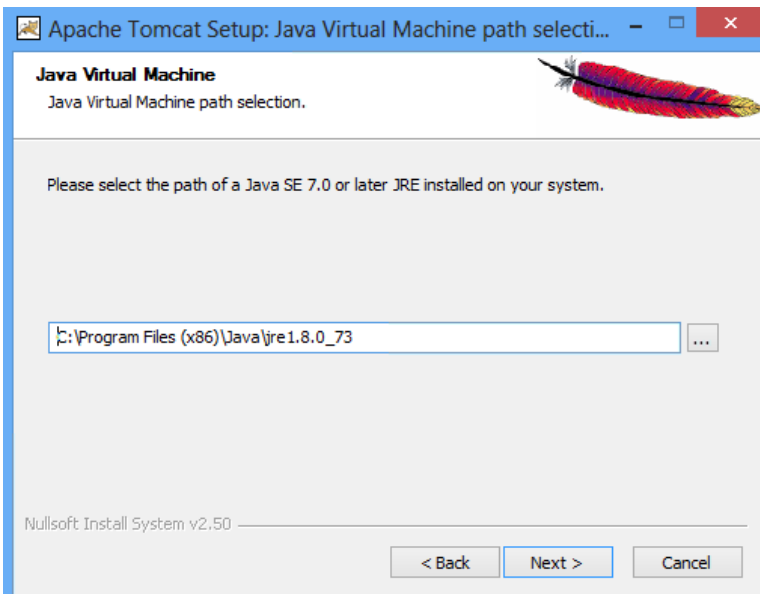
 apache-tomcat-8.0.32.exe

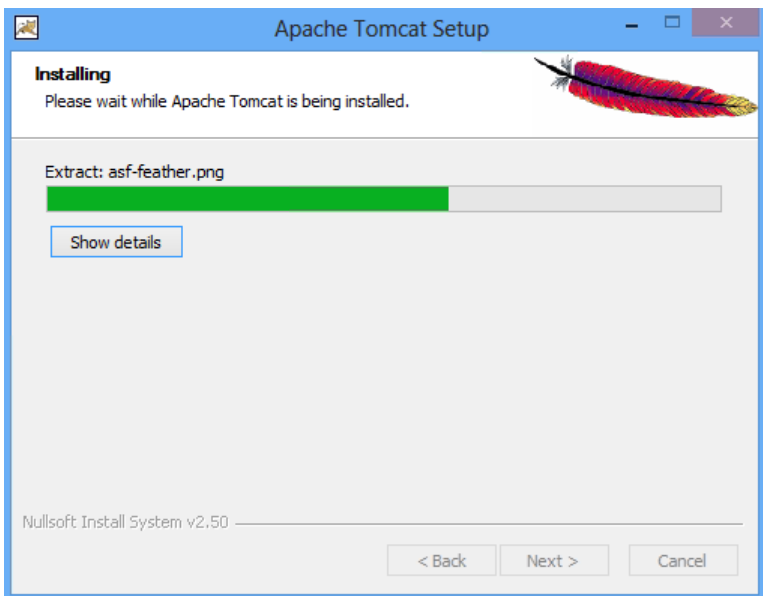
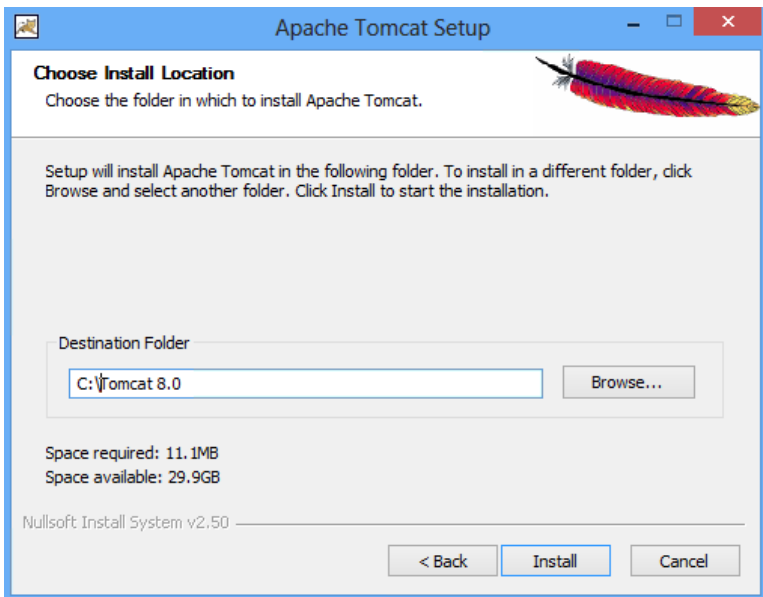


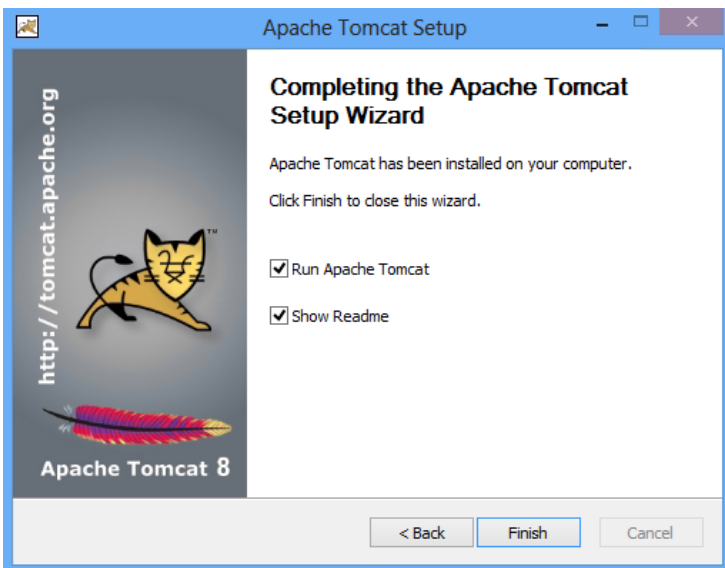




**Warning:** if some other application is using the port 8080 (i.e. IUCLID 6) then the port will have to be changed.

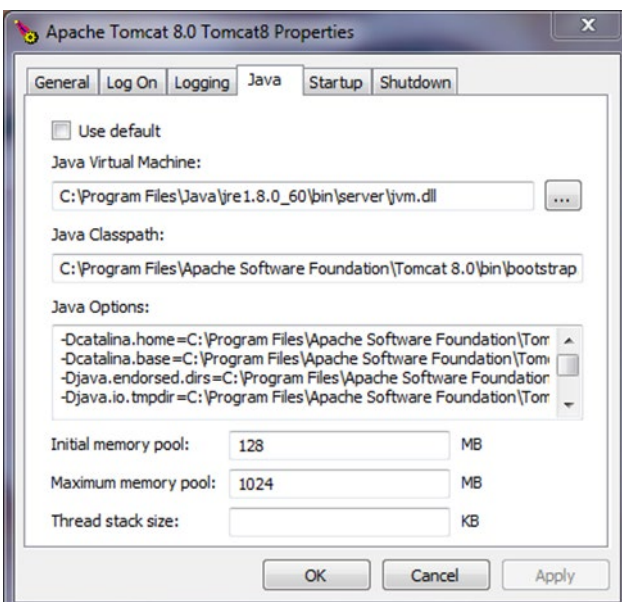






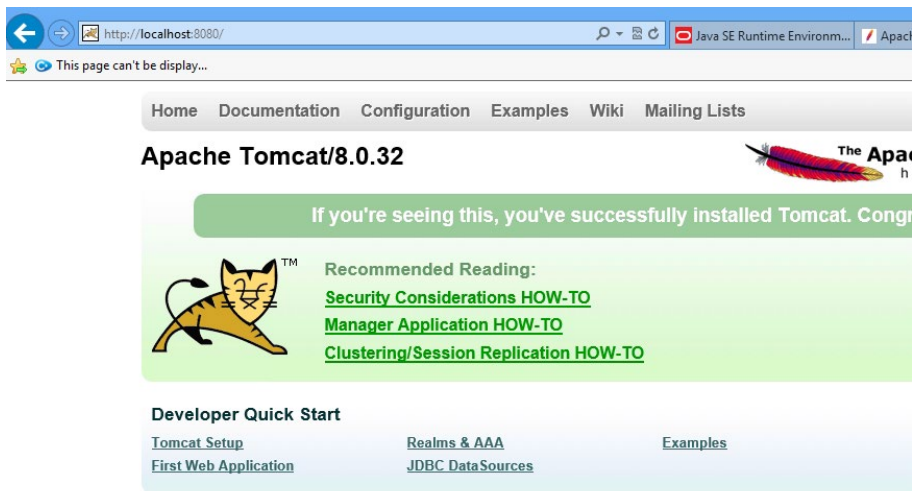
This should start Tomcat.

Set the maximum memory pool used by Tomcat:



Check whether Tomcat is running: <http://localhost:8080>







chesar